

## Anti-TUBB2A antibody [Mix] (STJ97053)

STJ97053

### GENERAL INFORMATION

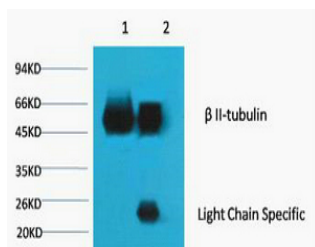
<b>Product Type</b>	Primary antibodies
<b>Short Description</b>	Mouse monoclonal antibody anti-Tubulin beta-2A chain is suitable for use in Western Blot, Immunohistochemistry, Immunofluorescence and Immunoprecipitation research applications.
<b>Applications</b>	WB/IHC/IF/IP
<b>Host/Source</b>	Mouse
<b>Reactivity</b>	Mouse/Rat

### PRODUCT PROPERTIES

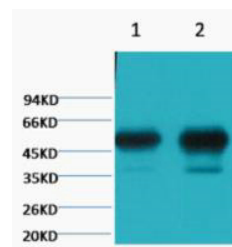
<b>Clonality</b>	Monoclonal
<b>Clone ID</b>	Mix
<b>Concentration</b>	
<b>Conjugation</b>	Unconjugated
<b>Purification</b>	The antibody was affinity-purified from mouse ascites by affinity-chromatography using specific immunogen.
<b>Dilution Range</b>	WB 1:50000-100000 IP 1:200 IHC 1:50-300 IF 1:50-200
<b>Formulation</b>	Liquid in PBS pH7.4, 0.5% BSA, 0.02% Sodium Azide and 50% Glycerol.
<b>Isotype</b>	IgG1
<b>Storage Instruction</b>	Store at -20°C for up to 1 year from the date of receipt, and avoid repeat freeze-thaw cycles.

### TARGET INFORMATION

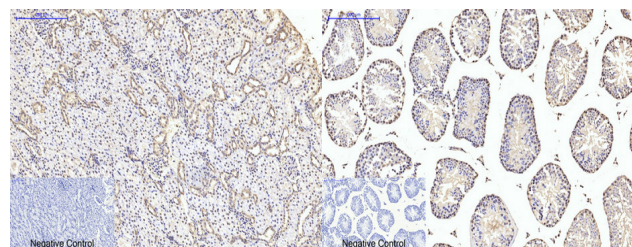
<b>Gene ID</b>	<a href="#">7280</a>
<b>Gene Symbol</b>	<a href="#">TUBB2A</a>
<b>Uniprot ID</b>	<a href="#">TBB2A_HUMAN</a>
<b>Immunogen</b>	Synthetic Peptide of Beta II tubulin
<b>Immunogen Region</b>	
<b>Specificity</b>	The antibody detects endogenous Beta II tubulin protein.
<b>Immunogen Sequence</b>	



1) Input: Mouse Brain Tissue Lysate, 2) IP product: IP dilute 1: 200, Western blot analysis: primary antibody: TDY191 1: 10000, Secondary antibody: Goat anti-Mouse IgG, Light chain specific (S003), 1: 5000



Western blot analysis of 1) Mouse Brain tissue, 2) Rat Brain tissue, diluted at 1:100000.



Immunohistochemical analysis of paraffin-embedded Rat-kidney tissue. 1. Beta II tubulin monoclonal antibody (Mix) was diluted at 1:200 (44°C, overnight). 2. Sodium citrate pH 6.0 was used for antibody retrieval (>98°C, 20min). 3. Secondary antibody was diluted at 1:200 (room temperature, 30min). Negative control was used by secondary antibody only.

Immunohistochemical analysis of paraffin-embedded Mouse-testis tissue. 1. Beta II tubulin monoclonal antibody (Mix) was diluted at 1:200 (44°C, overnight). 2. Sodium citrate pH 6.0 was used for antibody retrieval (>98°C, 20min). 3. Secondary antibody was diluted at 1:200 (room temperature, 30min). Negative control was used by secondary antibody only.

This product is suitable for in-vitro studies under the RESEARCH USE ONLY [RUO] licence. This product must not be used as for diagnostic or other medical purposes.  
St John's Laboratory Ltd, Knowledge Dock Business Centre, University Way, London, E16 2RD | Tel: 0208 223 3081