

## Anti-Cleaved-PARP1 antibody [Mix] (STJ97047)

STJ97047

### GENERAL INFORMATION

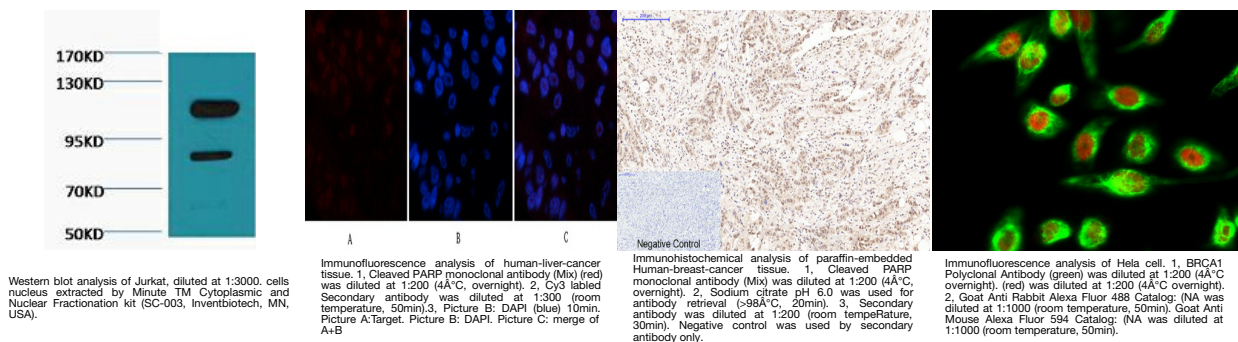
<b>Product Type</b>	Primary antibodies
<b>Short Description</b>	Mouse monoclonal antibody anti-Cleaved-Poly polymerase 1 ADP-ribosyltransferase 1 polymerase 1, processed C-terminus; Poly polymerase 1, processed N-terminus is suitable for use in Immunofluorescence, Western Blot and Immunohistochemistry research ap
<b>Applications</b>	IF/WB/IHC
<b>Host/Source</b>	Mouse
<b>Reactivity</b>	Human

### PRODUCT PROPERTIES

<b>Clonality</b>	Monoclonal
<b>Clone ID</b>	Mix
<b>Concentration</b>	
<b>Conjugation</b>	Unconjugated
<b>Purification</b>	The antibody was affinity-purified from mouse ascites by affinity-chromatography using specific immunogen.
<b>Dilution</b>	IF 1:50-200
<b>Range</b>	WB 1:2000-5000 IHC 1:50-300
<b>Formulation</b>	Liquid in PBS pH7.4, 0.5% BSA, 0.02% Sodium Azide and 50% Glycerol.
<b>Isotype</b>	IgG1
<b>Storage Instruction</b>	Store at -20°C for up to 1 year from the date of receipt, and avoid repeat freeze-thaw cycles.

### TARGET INFORMATION

<b>Gene ID</b>	142
<b>Gene Symbol</b>	PARP1
<b>Uniprot ID</b>	PARP1_HUMAN
<b>Immunogen</b>	Synthetic Peptide of Cleaved PARP
<b>Immunogen Region</b>	
<b>Specificity</b>	The antibody detects endogenous pro and active PARP protein.
<b>Immunogen Sequence</b>	



This product is suitable for in-vitro studies under the RESEARCH USE ONLY [RUO] licence. This product must not be used as for diagnostic or other medical purposes.  
St John's Laboratory Ltd, Knowledge Dock Business Centre, University Way, London, E16 2RD | Tel: 0208 223 3081