

Anti-TUBB3 antibody [Mix] (STJ97041)

STJ97041

GENERAL INFORMATION

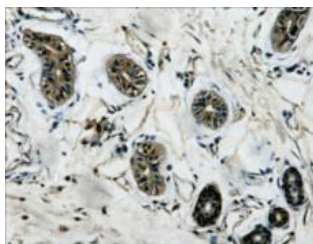
Product Type	Primary antibodies
Short Description	Mouse monoclonal antibody anti-Tubulin beta-3 chain is suitable for use in Western Blot, Immunohistochemistry, Immunofluorescence and Immunoprecipitation research applications.
Applications	WB/IHC/IF/IP
Host/Source	Mouse
Reactivity	Human/Rat/Mouse/Monkey/Dog/Chicken/Hamster/Rabbit

PRODUCT PROPERTIES

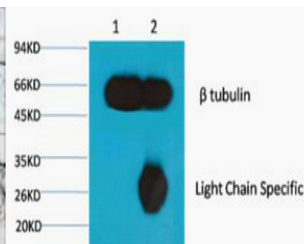
Clonality	Monoclonal
Clone ID	Mix
Concentration	1 mg/mL
Conjugation	Unconjugated
Purification	The antibody was affinity-purified from mouse ascites by affinity-chromatography using specific immunogen.
Dilution Range	WB 1:500-10000 IHC 1:200 IP 1:200 IF 1:50-200
Formulation	Liquid in PBS pH7.4, 0.5% BSA, 0.02% Sodium Azide and 50% Glycerol.
Isotype	IgG1
Storage Instruction	Store at -20°C for up to 1 year from the date of receipt, and avoid repeat freeze-thaw cycles.

TARGET INFORMATION

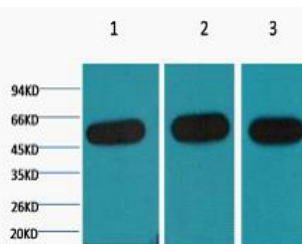
Gene ID	10381
Gene Symbol	TUBB3
Uniprot ID	TBB3_HUMAN
Immunogen	Synthetic Peptide of Beta-tubulin
Immunogen Region	
Specificity	The antibody detects endogenous Beta-tubulin protein.
Immunogen Sequence	



IHC Staining of Human colon tissue, diluted at 1:200.



1) Input: Mouse Brain Tissue Lysate, 2) IP product: IP dilute 1:200



Western blot analysis of 1) HeLa, 2) Mouse Kidney tissue, 3) Rat Heart tissue, diluted at 1:5000.

This product is suitable for in-vitro studies under the RESEARCH USE ONLY [RUO] licence. This product must not be used as for diagnostic or other medical purposes.
St John's Laboratory Ltd, Knowledge Dock Business Centre, University Way, London, E16 2RD | Tel: 0208 223 3081