

## Anti-EGFR antibody [M6] (STJ97036)

STJ97036

### GENERAL INFORMATION

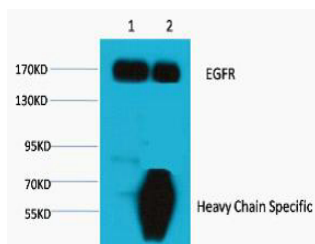
<b>Product Type</b>	Primary antibodies
<b>Short Description</b>	Mouse monoclonal antibody anti-Epidermal growth factor receptor is suitable for use in Western Blot research applications.
<b>Applications</b>	WB
<b>Host/Source</b>	Mouse
<b>Reactivity</b>	Human

### PRODUCT PROPERTIES

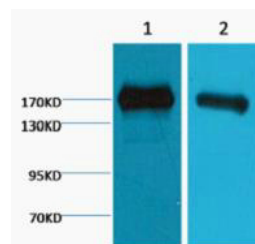
<b>Clonality</b>	Monoclonal
<b>Clone ID</b>	M6
<b>Concentration</b>	
<b>Conjugation</b>	Unconjugated
<b>Purification</b>	The antibody was affinity-purified from mouse ascites by affinity-chromatography using specific immunogen.
<b>Dilution Range</b>	WB 1:1000-3000
<b>Formulation</b>	Liquid in PBS pH7.4, 0.5% BSA, 0.02% Sodium Azide and 50% Glycerol.
<b>Isotype</b>	IgG1
<b>Storage Instruction</b>	Store at -20°C for up to 1 year from the date of receipt, and avoid repeat freeze-thaw cycles.

### TARGET INFORMATION

<b>Gene ID</b>	<a href="#">1956</a>
<b>Gene Symbol</b>	<a href="#">EGFR</a>
<b>Uniprot ID</b>	<a href="#">EGFR_HUMAN</a>
<b>Immunogen</b>	Synthetic Peptide of EGFR
<b>Immunogen Region</b>	
<b>Specificity</b>	The antibody detects endogenous EGFR protein.
<b>Immunogen Sequence</b>	



1. Input: HeLa Cell Lysate , 2. IP product: IP dilute 1:200  
Western blot analysis: primary antibody : 1:1, 000 ,  
Secondary antibody: Goat anti-Mouse IgG, Heavy Chain  
Specific (S003), 1:5, 000



Western blot analysis of 1) A431, 2) HeLa, diluted at  
1:2000.

This product is suitable for in-vitro studies under the RESEARCH USE ONLY [RUO] licence. This product must not be used as for diagnostic or other medical purposes.  
St John's Laboratory Ltd, Knowledge Dock Business Centre, University Way, London, E16 2RD | Tel: 0208 223 3081