

Anti-Cleaved-PARP1 antibody [M4] (STJ97034)

STJ97034

GENERAL INFORMATION

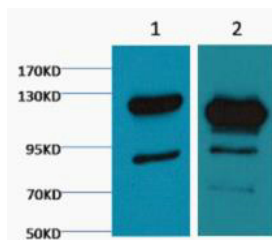
Product Type	Primary antibodies
Short Description	Mouse monoclonal antibody anti-Cleaved-Poly polymerase 1 ADP-ribosyltransferase 1 polymerase 1, processed C-terminus; Poly polymerase 1, processed N-terminus is suitable for use in Western Blot research applications.
Applications	WB
Host/Source	Mouse
Reactivity	Human

PRODUCT PROPERTIES

Clonality	Monoclonal
Clone ID	M4
Concentration	
Conjugation	Unconjugated
Purification	The antibody was affinity-purified from mouse ascites by affinity-chromatography using specific immunogen.
Dilution Range	WB 1:1000-3000
Formulation	Liquid in PBS pH7.4, 0.5% BSA, 0.02% Sodium Azide and 50% Glycerol.
Isotype	IgG1
Storage Instruction	Store at -20°C for up to 1 year from the date of receipt, and avoid repeat freeze-thaw cycles.

TARGET INFORMATION

Gene ID	142
Gene Symbol	PARP1
Uniprot ID	PARP1_HUMAN
Immunogen	Synthetic Peptide of Cleaved PARP
Region	
Specificity	The antibody detects endogenous pro and active PARP protein.
Immunogen Sequence	



Western blot analysis of 1) Jurkat, 2) Hela, diluted at 1:2000. cells nucleus extracted by Minute™ Cytoplasmic and Nuclear Fractionation kit (SC-003, Inventibiotek, MN, USA).

This product is suitable for in-vitro studies under the RESEARCH USE ONLY [RUO] licence. This product must not be used as for diagnostic or other medical purposes.
St John's Laboratory Ltd, Knowledge Dock Business Centre, University Way, London, E16 2RD | Tel: 0208 223 3081