

## Anti-COL3A1 antibody [Q76] (STJ97025)

STJ97025

### GENERAL INFORMATION

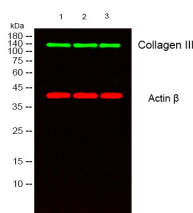
<b>Product Type</b>	Primary antibodies
<b>Short Description</b>	Mouse monoclonal antibody anti-Collagen alpha-1III chain is suitable for use in Immunohistochemistry and Immunofluorescence research applications.
<b>Applications</b>	IHC/IF
<b>Host/Source</b>	Mouse
<b>Reactivity</b>	Human/Mouse/Rat

### PRODUCT PROPERTIES

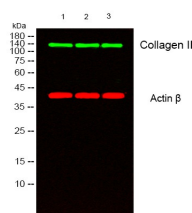
<b>Clonality</b>	Monoclonal
<b>Clone ID</b>	Q76
<b>Concentration</b>	
<b>Conjugation</b>	Unconjugated
<b>Purification</b>	The antibody was affinity-purified from mouse ascites by affinity-chromatography using specific immunogen.
<b>Dilution Range</b>	IF 1:200 IHC 1:50-300
<b>Formulation</b>	Liquid in PBS pH7.4, 0.5% BSA, 0.02% Sodium Azide and 50% Glycerol.
<b>Isotype</b>	IgG1
<b>Storage</b>	Store at -20°C for up to 1 year from the date of receipt, and avoid repeat freeze-thaw cycles.
<b>Instruction</b>	

### TARGET INFORMATION

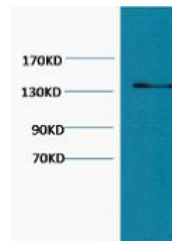
<b>Gene ID</b>	1281
<b>Gene Symbol</b>	COL3A1
<b>Uniprot ID</b>	CO3A1_HUMAN
<b>Immunogen</b>	Synthetic Peptide of Collagen III
<b>Immunogen Region</b>	
<b>Specificity</b>	The antibody detects endogenous Collagen III protein.
<b>Immunogen Sequence</b>	



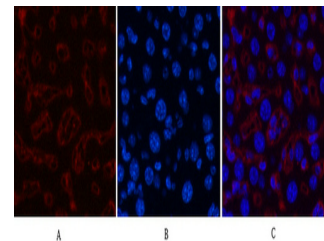
Western blot analysis of lysates from 1) MCF7, 2) HeLa, 3) 293T cells. (Green) primary antibody was diluted at 1:1000, 4A°C over night, secondary antibody (cat: (NA) was diluted at 1:10000, 37A°C 1hour. (Red) Actin Beta Polyclonal Antibody (cat: (STJ91464) antibody was diluted at 1:5000 as loading control, 4A°C over night, secondary antibody (cat: (NA) was diluted at 1:10000, 37A°C 1hour.



Western blot analysis of lysates from 1) MCF7, 2) HeLa, 3) 293T cells. (Green) primary antibody was diluted at 1:1000, 4A°C over night, secondary antibody (cat: (NA) was diluted at 1:10000, 37A°C 1hour. (Red) Actin Beta Polyclonal Antibody (cat: (STJ91464) antibody was diluted at 1:5000 as loading control, 4A°C over night, secondary antibody (cat: (NA) was diluted at 1:10000, 37A°C 1hour.



Western blot analysis of HeLa, diluted at 1:1000.



Immunofluorescence analysis of Mouse-liver tissue. 1, Collagen III monoclonal antibody (Q76) (red) was diluted at 1:200 (4A°C, overnight). 2, Cy3 labeled Secondary antibody was diluted at 1:300 (room temperature, 50min). 3, Picture B: DAPI (blue) 10min. Picture A: Target. Picture B: DAPI. Picture C: merge of A+B