

Anti-IL2RA antibody [Q22] (STJ97009)

STJ97009

GENERAL INFORMATION

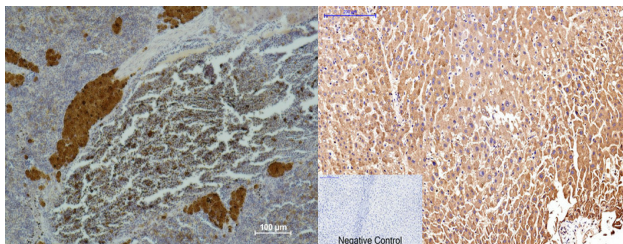
Product Type	Primary antibodies
Short Description	Mouse monoclonal antibody anti-Interleukin-2 receptor subunit alpha is suitable for use in Immunohistochemistry and Immunofluorescence research applications.
Applications	IHC/IF
Host/Source	Mouse
Reactivity	Human

PRODUCT PROPERTIES

Clonality	Monoclonal
Clone ID	Q22
Concentration	
Conjugation	Unconjugated
Purification	The antibody was affinity-purified from mouse ascites by affinity-chromatography using specific immunogen.
Dilution Range	IHC 1:200 IF 1:50-200
Formulation	Liquid in PBS pH7.4, 0.5% BSA, 0.02% Sodium Azide and 50% Glycerol.
Isotype	IgG1
Storage	Store at -20°C for up to 1 year from the date of receipt, and avoid repeat freeze-thaw cycles.
Instruction	

TARGET INFORMATION

Gene ID	3559
Gene Symbol	IL2RA
Uniprot ID	IL2RA_HUMAN
Immunogen	Synthetic Peptide of CD25
Immunogen Region	
Specificity	The antibody detects endogenous human CD25 protein.
Immunogen Sequence	



Immunohistochemical analysis of paraffin-embedded Mouse Spleen Tissue using CD 25 Mouse mAb diluted at 1:500.

Negative Control
Immunohistochemical analysis of paraffin-embedded Human-liver tissue. 1. CD25 monoclonal antibody (Q22) was diluted at 1:200 (4°C, overnight). 2. Sodium citrate pH 6.0 was used for antibody retrieval (>98°C, 20min). 3. Secondary antibody was diluted at 1:200 (room temperature, 30min). Negative control was used by secondary antibody only.