

Anti-Alpha-tubulin antibody (350-451 aa) [8F11] (STJ96937)

STJ96937

GENERAL INFORMATION

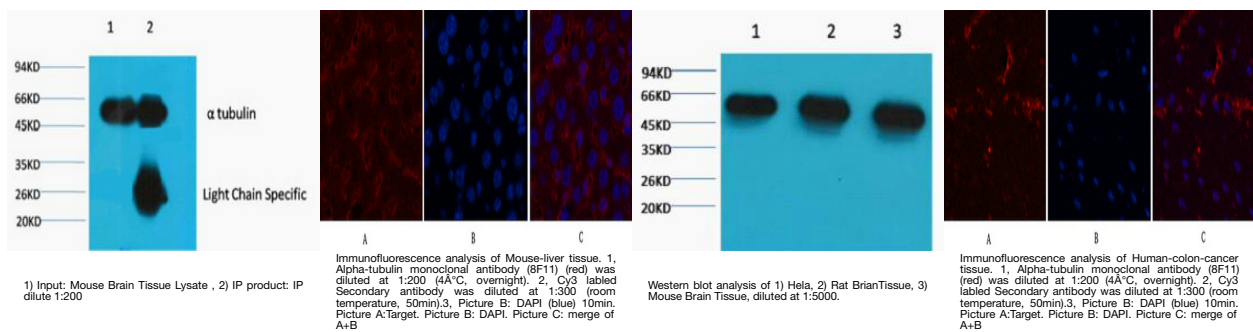
Product Type	Primary antibodies
Short Description	Mouse monoclonal antibody anti-Tubulin alpha-1A chain and Tubulin alpha-1B chain (350-451 aa) is suitable for use in Western Blot, Immunohistochemistry, Immunofluorescence and Immunoprecipitation research applications.
Applications	WB/IHC/IF/IP
Host/Source	Mouse
Reactivity	Human/Rat/Mouse/D.melanogaster

PRODUCT PROPERTIES

Clonality	Monoclonal
Clone ID	8F11
Concentration	
Conjugation	Unconjugated
Purification	The antibody was affinity-purified from mouse ascites by affinity-chromatography using specific immunogen.
Dilution	WB 1:500-10000
Range	IP 1:200 IF 1:200 IHC 1:50-300
Formulation	Liquid in PBS pH7.4, 0.5% BSA, 0.02% Sodium Azide and 50% Glycerol.
Isotype	IgG2bk
Storage Instruction	Store at -20°C for up to 1 year from the date of receipt, and avoid repeat freeze-thaw cycles.

TARGET INFORMATION

Gene ID	10376 7846
Gene Symbol	TUBA1B TUBA1A
Uniprot ID	TBA1B_HUMAN TBA1A_HUMAN
Immunogen	Recombinant Protein of Tubulin alpha-1A chain at the amino acid range 350-451
Immunogen Region	350-451 aa
Specificity	The antibody detects endogenous Alpha-tubulin protein.
Immunogen Sequence	



This product is suitable for in-vitro studies under the RESEARCH USE ONLY [RUO] licence. This product must not be used as for diagnostic or other medical purposes.
St John's Laboratory Ltd, Knowledge Dock Business Centre, University Way, London, E16 2RD | Tel: 0208 223 3081