

Anti-TUBB3 antibody [5G3] (STJ96932)

STJ96932

GENERAL INFORMATION

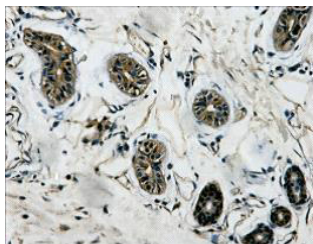
Product Type	Primary antibodies
Short Description	Mouse monoclonal antibody anti-Tubulin beta-3 chain is suitable for use in Western Blot, Immunofluorescence and Immunohistochemistry research applications.
Applications	WB/IF/IHC
Host/Source	Mouse
Reactivity	Human/Rat/Mouse/Monkey/Dog/Chicken/Hamster/Rabbit/Sheep/Insect/Yeast/Fish/Cow/Rice

PRODUCT PROPERTIES

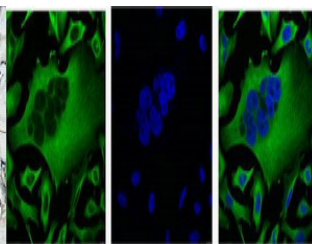
Clonality	Monoclonal
Clone ID	5G3
Concentration	1 mg/mL
Conjugation	Unconjugated
Purification	The antibody was affinity-purified from mouse ascites by affinity-chromatography using specific immunogen.
Dilution Range	WB 1:5000 IHC 1:200 IF 1:200
Formulation	Liquid in PBS pH7.4, 0.5% BSA, 0.02% Sodium Azide and 50% Glycerol.
Isotype	IgG1
Storage Instruction	Store at -20°C for up to 1 year from the date of receipt, and avoid repeat freeze-thaw cycles.

TARGET INFORMATION

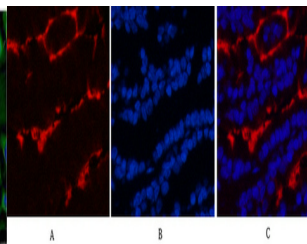
Gene ID	10381
Gene Symbol	TUBB3
Uniprot ID	TBB3_HUMAN
Immunogen	Synthetic Peptide of Beta-Tubulin
Immunogen Region	
Specificity	The antibody detects endogenous Beta-tubulin protein.
Immunogen Sequence	



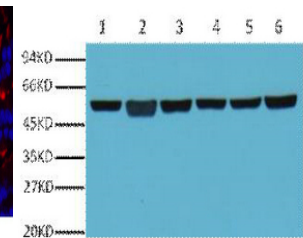
IHC Staining of Human colon tissue, diluted at 1:200.



IF analysis of HeLa with Beta-Tubulin monoclonal antibody (Left) and DAPI (Right) diluted at 1:100.



Immunofluorescence analysis of Mouse-lung tissue. 1. Beta-Tubulin monoclonal antibody (5G3) (red) was diluted at 1:200 (4A°C, overnight). 2. Cy3 labeled Secondary antibody was diluted at 1:300 (room temperature, 50min). 3. Picture B: DAPI (blue) 10min. Picture A: Target. Picture B: DAPI. Picture C: merge of A+B



Western blot analysis of A549 (1), Rat brain (2), Mouse brain (3), Chicken lung (4) and Rabbit testis (5), Sheep muscle (6), diluted at 1:5000.

This product is suitable for in-vitro studies under the RESEARCH USE ONLY [RUO] licence. This product must not be used as for diagnostic or other medical purposes.
St John's Laboratory Ltd, Knowledge Dock Business Centre, University Way, London, E16 2RD | Tel: 0208 223 3081