

Anti-ACTB antibody [5B7] (STJ96930)

STJ96930

GENERAL INFORMATION

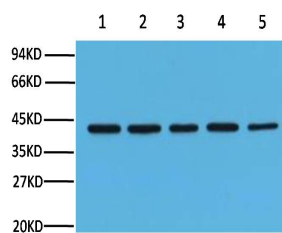
Product Type	Primary antibodies
Short Description	Mouse monoclonal antibody anti-Actin, cytoplasmic 1 is suitable for use in Immunofluorescence, Western Blot and Immunohistochemistry research applications.
Applications	IF/WB/IHC
Host/Source	Mouse
Reactivity	Human/Rat/Mouse/Monkey/Dog/Chicken/Hamster/Rabbit/Insect/Pig/Lenok

PRODUCT PROPERTIES

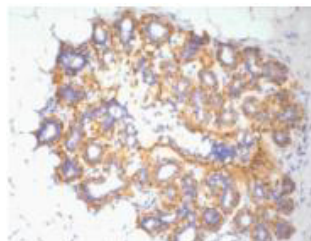
Clonality	Monoclonal
Clone ID	5B7
Concentration	1 mg/mL
Conjugation	Unconjugated
Purification	The antibody was affinity-purified from mouse ascites by affinity-chromatography using specific immuonogen.
Dilution Range	IF 1:50-200 WB 1:5000-20000 IHC 1:200-300
Formulation	Liquid in PBS pH7.4, 0.5% BSA, 0.02% Sodium Azide and 50% Glycerol.
Isotype	IgG1
Storage Instruction	Store at -20°C for up to 1 year from the date of receipt, and avoid repeat freeze-thaw cycles.

TARGET INFORMATION

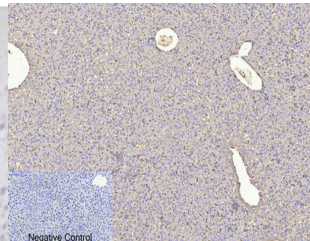
Gene ID	60
Gene Symbol	ACTB
Uniprot ID	ACTB_HUMAN
Immunogen	Synthetic Peptide of Beta-actin
Immunogen Region	
Specificity	The antibody detects endogenous Beta-actin protein.
Immunogen Sequence	



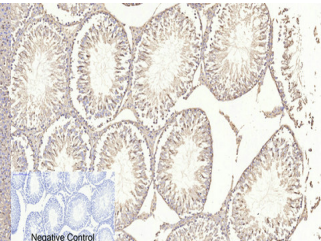
Western blot analysis of Hela (1) Rat brain (2) Mouse brain (3) , Chicken lung (4) and Rabbit testis (5), diluted at 1:10000.



IHC Staining of Human ovary tissue, diluted at 1:200



Immunohistochemical analysis of paraffin-embedded Mouse-liver tissue. 1. Beta-actin monoclonal antibody (5B7) was diluted at 1:200 (4A°C, overnight). 2. Sodium citrate pH 6.0 was used for antibody retrieval (>98A°C, 20min). 3. Secondary antibody was diluted at 1:200 (room temperature, 30min). Negative control was used by secondary antibody only.



Immunohistochemical analysis of paraffin-embedded Rat-testis tissue. 1. Beta-actin monoclonal antibody (5B7) was diluted at 1:200 (4A°C, overnight). 2. Sodium citrate pH 6.0 was used for antibody retrieval (>98A°C, 20min). 3. Secondary antibody was diluted at 1:200 (room temperature, 30min). Negative control was used by secondary antibody only.

This product is suitable for in-vitro studies under the RESEARCH USE ONLY [RUO] licence. This product must not be used as for diagnostic or other medical purposes.
St John's Laboratory Ltd, Knowledge Dock Business Centre, University Way, London, E16 2RD | Tel: 0208 223 3081