

## Anti-RFP-Tag antibody [5G4] (STJ96913)

STJ96913

### GENERAL INFORMATION

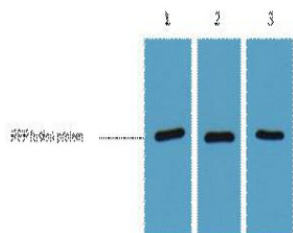
<b>Product Type</b>	Primary antibodies
<b>Short Description</b>	Mouse monoclonal antibody anti-RFP-Tag-Tag is suitable for use in Western Blot and Immunofluorescence research applications.
<b>Applications</b>	WB/IF
<b>Host/Source</b>	Mouse
<b>Reactivity</b>	Species independent

### PRODUCT PROPERTIES

<b>Clonality</b>	Monoclonal
<b>Clone ID</b>	5G4
<b>Concentration</b>	
<b>Conjugation</b>	Unconjugated
<b>Purification</b>	The antibody was affinity-purified from mouse ascites by affinity-chromatography using specific immunogen.
<b>Dilution Range</b>	WB 1:10000-20000 IF 1:200-2000
<b>Formulation</b>	Liquid in PBS pH7.4, 0.5% BSA, 0.02% Sodium Azide and 50% Glycerol.
<b>Isotype</b>	IgG1
<b>Storage Instruction</b>	Store at -20°C for up to 1 year from the date of receipt, and avoid repeat freeze-thaw cycles.

### TARGET INFORMATION

<b>Gene ID</b>	
<b>Gene Symbol</b>	
<b>Uniprot ID</b>	
<b>Immunogen</b>	Recombinant Protein of RFP-Tag
<b>Immunogen Region</b>	
<b>Specificity</b>	The antibody detects RFP ERFP tag fusion proteins. It isn't reactive against GFP CFP YFP. It is reactive against morange tag weakly.
<b>Immunogen Sequence</b>	



1ug RFP fusion protein+ primary antibody dilution at 1)  
1:3000(2) 1:5000(3) 1:10000

This product is suitable for in-vitro studies under the RESEARCH USE ONLY [RUO] licence. This product must not be used as for diagnostic or other medical purposes.  
St John's Laboratory Ltd, Knowledge Dock Business Centre, University Way, London, E16 2RD | Tel: 0208 223 3081