

Anti-Histone H2A antibody (Internal) (STJ96865)

STJ96865

GENERAL INFORMATION

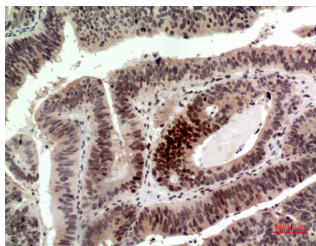
Product Type	Primary antibodies
Short Description	Rabbit polyclonal antibody anti-Histone H2A type 1 (Internal) is suitable for use in Western Blot, Immunohistochemistry, Immunofluorescence and ELISA research applications.
Applications	WB/IHC/IF/ELISA
Host/Source	Rabbit
Reactivity	Human/Mouse/Rat

PRODUCT PROPERTIES

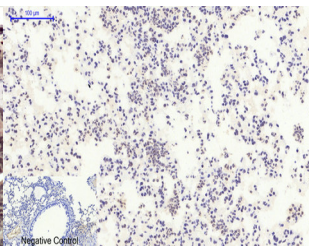
Clonality	Polyclonal
Clone ID	
Concentration	1 mg/mL
Conjugation	Unconjugated
Purification	The antibody was affinity-purified from rabbit antiserum by affinity-chromatography using epitope-specific immunogen.
Dilution Range	WB 1:500-1:2000 IHC-P 1:100-1:300 ELISA 1:20000 IF 1:50-200
Formulation	Liquid in PBS containing 50% Glycerol, 0.5% BSA and 0.02% Sodium Azide.
Isotype	IgG
Storage Instruction	Store at -20°C for up to 1 year from the date of receipt, and avoid repeat freeze-thaw cycles.

TARGET INFORMATION

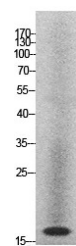
Gene ID	8329/8330/8332/8336/8969
Gene Symbol	H2AC11.H2AC13.H2AC15.H2AC16.H2AC17
Uniprot ID	H2A1_HUMAN
Immunogen	Synthesized peptide derived from the Internal region of human Histone H2A. 20-50
Immunogen Region	Internal
Specificity	Histone H2A Polyclonal Antibody detects endogenous levels of Histone H2A protein.
Immunogen Sequence	



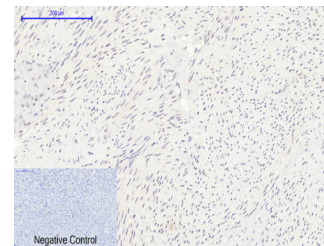
Immunohistochemical analysis of paraffin-embedded human-colon-cancer, antibody was diluted at 1:100



Immunohistochemical analysis of paraffin-embedded Mouse-lung tissue. 1. Histone H2A Polyclonal Antibody was diluted at 1:200 (44°C, overnight). 2. Sodium citrate pH 6.0 was used for antibody retrieval (>98°C, 20min). 3. Secondary antibody was diluted at 1:200 (room temperature, 30min). Negative control was used by secondary antibody only.



Western blot analysis of HeLa cells using Histone H2A Polyclonal Antibody. Secondary antibody was diluted at 1:20000 cells nucleus extracted by Minute TM Cytoplasmic and Nuclear Fractionation kit (SC-003, Inventibiotec, MN, USA).



Immunohistochemical analysis of paraffin-embedded Human-uterus tissue. 1. Histone H2A Polyclonal Antibody was diluted at 1:200 (44°C, overnight). 2. Sodium citrate pH 6.0 was used for antibody retrieval (>98°C, 20min). 3. Secondary antibody was diluted at 1:200 (room temperature, 30min). Negative control was used by secondary antibody only.

This product is suitable for in-vitro studies under the RESEARCH USE ONLY [RUO] licence. This product must not be used as for diagnostic or other medical purposes.
St John's Laboratory Ltd, Knowledge Dock Business Centre, University Way, London, E16 2RD | Tel: 0208 223 3081