

Anti-STING1 antibody (301-350 aa) (STJ96853)

STJ96853

GENERAL INFORMATION

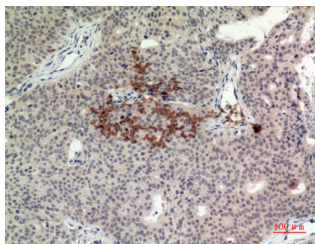
Product Type	Primary antibodies
Short Description	Rabbit polyclonal antibody anti-Stimulator of interferon genes protein (301-350 aa) is suitable for use in Western Blot, Immunohistochemistry, Immunofluorescence and ELISA research applications.
Applications	WB/IHC/IF/ELISA
Host/Source	Rabbit
Reactivity	Human/Mouse

PRODUCT PROPERTIES

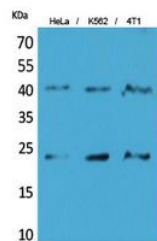
Clonality	Polyclonal
Clone ID	
Concentration	1 mg/mL
Conjugation	Unconjugated
Purification	The antibody was affinity-purified from rabbit antiserum by affinity-chromatography using epitope-specific immunogen.
Dilution	WB 1:500-1:2000
Range	IHC-P 1:100-1:300 ELISA 1:20000 IF 1:50-200
Formulation	Liquid in PBS containing 50% Glycerol, 0.5% BSA and 0.02% Sodium Azide.
Isotype	IgG
Storage Instruction	Store at -20°C for up to 1 year from the date of receipt, and avoid repeat freeze-thaw cycles.

TARGET INFORMATION

Gene ID	340061
Gene Symbol	STING1
Uniprot ID	STING_HUMAN
Immunogen	Synthesized peptide derived from Transmembrane protein 173 at the amino acid range 301-350
Immunogen Region	301-350 aa
Specificity	TMEM173 Polyclonal Antibody detects endogenous levels of TMEM173 protein.
Immunogen Sequence	



Immunohistochemical analysis of paraffin-embedded human-Breast-cancer, antibody was diluted at 1:100



Western blot analysis of HeLa, K562, 4T1 cells using TMEM173 Polyclonal Antibody. Secondary antibody was diluted at 1:20000