

Anti-LILRA5 antibody (141-190 aa) (STJ96830)

STJ96830

GENERAL INFORMATION

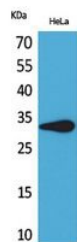
Product Type	Primary antibodies
Short Description	Rabbit polyclonal antibody anti-Leukocyte immunoglobulin-like receptor subfamily A member 5 (141-190 aa) is suitable for use in Western Blot and ELISA research applications.
Applications	WB/ELISA
Host/Source	Rabbit
Reactivity	Human/Rat/Mouse

PRODUCT PROPERTIES

Clonality	Polyclonal
Clone ID	
Concentration	1 mg/mL
Conjugation	Unconjugated
Purification	The antibody was affinity-purified from rabbit antiserum by affinity-chromatography using epitope-specific immunogen.
Dilution Range	WB 1:500-1:2000 ELISA 1:20000
Formulation	Liquid in PBS containing 50% Glycerol, 0.5% BSA and 0.02% Sodium Azide.
Isotype	IgG
Storage	Store at -20°C for up to 1 year from the date of receipt, and avoid repeat freeze-thaw cycles.
Instruction	

TARGET INFORMATION

Gene ID	353514
Gene Symbol	LILRA5
Uniprot ID	LILRA5_HUMAN
Immunogen	The antiserum was produced against synthesized peptide derived from the Internal region of human LILRA5 at the amino acid range 141-190
Immunogen Region	141-190 aa
Specificity	CD85f Polyclonal Antibody detects endogenous levels of CD85f protein.
Immunogen Sequence	



Western blot analysis of HeLa cells using CD85f Polyclonal Antibody. Secondary antibody was diluted at 1:20000

This product is suitable for in-vitro studies under the RESEARCH USE ONLY [RUO] licence. This product must not be used as for diagnostic or other medical purposes.
St John's Laboratory Ltd, Knowledge Dock Business Centre, University Way, London, E16 2RD | Tel: 0208 223 3081