

Anti-HSP70 antibody (STJ96789)

STJ96789

GENERAL INFORMATION

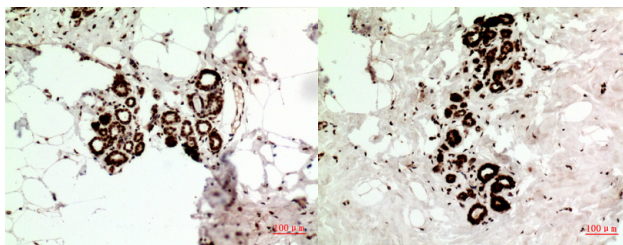
Product Type	Primary antibodies
Short Description	Rabbit polyclonal antibody anti-HSP70 is suitable for use in Immunofluorescence, Western Blot, Immunohistochemistry and ELISA research applications.
Applications	IF/WB/IHC/ELISA
Host/Source	Rabbit
Reactivity	Human/Rat/Mouse

PRODUCT PROPERTIES

Clonality	Polyclonal
Clone ID	
Concentration	1 mg/mL
Conjugation	Unconjugated
Purification	The antibody was affinity-purified from rabbit antiserum by affinity-chromatography using epitope-specific immunogen.
Dilution Range	IF 1:50-200 WB 1:500-1:2000 IHC-P 1:100-1:300 ELISA 1:20000
Formulation	Liquid in PBS containing 50% Glycerol, 0.5% BSA and 0.02% Sodium Azide.
Isotype	IgG
Storage Instruction	Store at -20°C for up to 1 year from the date of receipt, and avoid repeat freeze-thaw cycles.

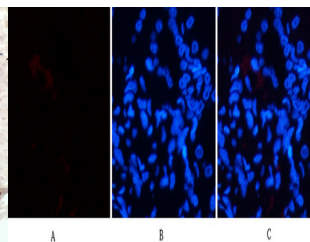
TARGET INFORMATION

Gene ID	3303/3304 3303/3304
Gene Symbol	HSPA1B HSPA1A
Uniprot ID	HS71B_HUMAN HS71A_HUMAN
Immunogen	Synthesized peptide derived from the human HSP70 around the non-acetylation site of K246.
Immunogen Region	
Specificity	HSP70 Polyclonal Antibody detects endogenous levels of HSP70 protein
Immunogen Sequence	

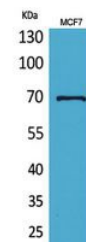


Immunohistochemical analysis of paraffin-embedded human-Breast-cancer, antibody was diluted at 1:100

Immunohistochemical analysis of paraffin-embedded human-Breast-cancer, antibody was diluted at 1:100



Immunofluorescence analysis of human-kidney tissue. 1. HSP70 Polyclonal Antibody (red) was diluted at 1:200 (4A°C, overnight), 2. Cy3 labeled Secondary antibody was diluted at 1:300 (room temperature, 50min).3. Picture B: DAPI (blue) 10min. Picture A:Target. Picture B: DAPI. Picture C: merge of A+B



Western blot analysis of MCF7 cells using HSP70 Polyclonal Antibody.. Secondary antibody was diluted at 1:20000