

Anti-IL24 antibody (131-180 aa) (STJ96776)

STJ96776

GENERAL INFORMATION

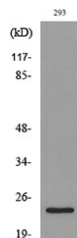
Product Type	Primary antibodies
Short Description	Rabbit polyclonal antibody anti-Interleukin-24 (131-180 aa) is suitable for use in Western Blot, Immunohistochemistry, Immunofluorescence and ELISA research applications.
Applications	WB/IHC/IF/ELISA
Host/Source	Rabbit
Reactivity	Human/Rat/Mouse

PRODUCT PROPERTIES

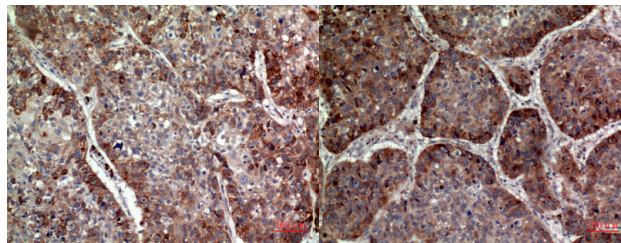
Clonality	Polyclonal
Clone ID	
Concentration	1 mg/mL
Conjugation	Unconjugated
Purification	The antibody was affinity-purified from rabbit antiserum by affinity-chromatography using epitope-specific immunogen.
Dilution Range	WB 1:500-1:2000 IHC-P 1:100-1:300 ELISA 1:20000 IF 1:50-200
Formulation	Liquid in PBS containing 50% Glycerol, 0.5% BSA and 0.02% Sodium Azide.
Isotype	IgG
Storage Instruction	Store at -20°C for up to 1 year from the date of receipt, and avoid repeat freeze-thaw cycles.

TARGET INFORMATION

Gene ID	11009
Gene Symbol	IL24
Uniprot ID	IL24_HUMAN
Immunogen	The antiserum was produced against synthesized peptide derived from the Internal region of human IL24 at the amino acid range 131-180
Immunogen Region	131-180 aa
Specificity	MDA-7 Polyclonal Antibody detects endogenous levels of MDA-7 protein.
Immunogen Sequence	

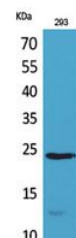


Western blot analysis of lysate from 293 cells, using IL24 Antibody.



Immunohistochemical analysis of paraffin-embedded human lung, antibody was diluted at 1:100

Immunohistochemical analysis of paraffin-embedded human lung, antibody was diluted at 1:100



Western blot analysis of 293 cells using MDA-7 Polyclonal Antibody. Secondary antibody was diluted at 1:20000

This product is suitable for in-vitro studies under the RESEARCH USE ONLY [RUO] licence. This product must not be used as for diagnostic or other medical purposes.
St John's Laboratory Ltd, Knowledge Dock Business Centre, University Way, London, E16 2RD | Tel: 0208 223 3081