

Anti-PTGDR2 antibody (161-210 aa) (STJ96770)

STJ96770

GENERAL INFORMATION

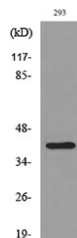
Product Type	Primary antibodies
Short Description	Rabbit polyclonal antibody anti-Prostaglandin D2 receptor 2 (161-210 aa) is suitable for use in Western Blot, Immunohistochemistry, Immunofluorescence and ELISA research applications.
Applications	WB/IHC/IF/ELISA
Host/Source	Rabbit
Reactivity	Human/Mouse

PRODUCT PROPERTIES

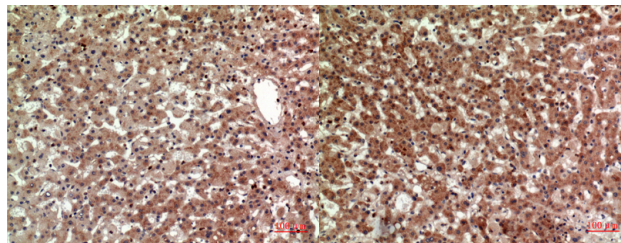
Clonality	Polyclonal
Clone ID	
Concentration	1 mg/mL
Conjugation	Unconjugated
Purification	The antibody was affinity-purified from rabbit antiserum by affinity-chromatography using epitope-specific immunogen.
Dilution Range	WB 1:500-1:2000 IHC-P 1:100-1:300 ELISA 1:20000 IF 1:50-200
Formulation	Liquid in PBS containing 50% Glycerol, 0.5% BSA and 0.02% Sodium Azide.
Isotype	IgG
Storage Instruction	Store at -20°C for up to 1 year from the date of receipt, and avoid repeat freeze-thaw cycles.

TARGET INFORMATION

Gene ID	11251
Gene Symbol	PTGDR2
Uniprot ID	PD2R2_HUMAN
Immunogen	The antiserum was produced against synthesized peptide derived from the Internal region of human PTGDR2 at the amino acid range 161-210
Immunogen Region	161-210 aa
Specificity	CD294 Polyclonal Antibody detects endogenous levels of CD294 protein.
Immunogen Sequence	



Western blot analysis of lysate from 293 cells, using PTGDR2 Antibody.



Immunohistochemical analysis of paraffin-embedded human liver, antibody was diluted at 1:100

Immunohistochemical analysis of paraffin-embedded human liver, antibody was diluted at 1:100



Western blot analysis of 293 cells using CD294 Polyclonal Antibody. Secondary antibody was diluted at 1:20000

This product is suitable for in-vitro studies under the RESEARCH USE ONLY [RUO] licence. This product must not be used as for diagnostic or other medical purposes.

St John's Laboratory Ltd, Knowledge Dock Business Centre, University Way, London, E16 2RD | Tel: 0208 223 3081