

Anti-ALCAM antibody (481-530 aa) (STJ96761)

STJ96761

GENERAL INFORMATION

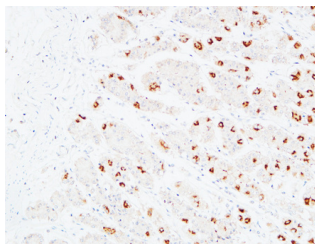
Product Type	Primary antibodies
Short Description	Rabbit polyclonal antibody anti-CD166 antigen (481-530 aa) is suitable for use in Immunofluorescence, Western Blot and ELISA research applications.
Applications	IF/WB/ELISA
Host/Source	Rabbit
Reactivity	Human/Mouse/Rat

PRODUCT PROPERTIES

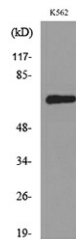
Clonality	Polyclonal
Clone ID	
Concentration	1 mg/mL
Conjugation	Unconjugated
Purification	The antibody was affinity-purified from rabbit antiserum by affinity-chromatography using epitope-specific immunogen.
Dilution Range	IF 1:50-200 WB 1:500-1:2000 ELISA 1:20000
Formulation	Liquid in PBS containing 50% Glycerol, 0.5% BSA and 0.02% Sodium Azide.
Isotype	IgG
Storage Instruction	Store at -20°C for up to 1 year from the date of receipt, and avoid repeat freeze-thaw cycles.

TARGET INFORMATION

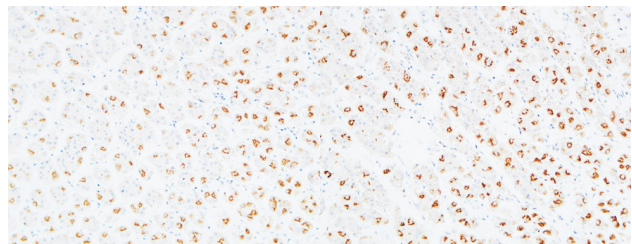
Gene ID	214
Gene Symbol	ALCAM
Uniprot ID	CD166_HUMAN
Immunogen	The antiserum was produced against synthesized peptide derived from the C-terminal region of human ALCAM at the amino acid range 481-530
Immunogen Region	481-530 aa
Specificity	CD166 Polyclonal Antibody detects endogenous levels of CD166 protein.
Immunogen Sequence	



Immunohistochemical analysis of paraffin-embedded Human stomach. 1. Antibody was diluted at 1:100 (44°C overnight). 2. High-pressure and temperature EDTA, pH8.0 was used for antigen retrieval. 3. Secondary antibody was diluted at 1:200 (room temperature, 30min).



Western blot analysis of lysate from K562 cells, using ALCAM Antibody.



Immunohistochemical analysis of paraffin-embedded Human stomach. 1. Antibody was diluted at 1:100 (44°C overnight). 2. High-pressure and temperature EDTA, pH8.0 was used for antigen retrieval. 3. Secondary antibody was diluted at 1:200 (room temperature, 30min).

Immunohistochemical analysis of paraffin-embedded Human stomach. 1. Antibody was diluted at 1:100 (44°C overnight). 2. High-pressure and temperature EDTA, pH8.0 was used for antigen retrieval. 3. Secondary antibody was diluted at 1:200 (room temperature, 30min).

This product is suitable for in-vitro studies under the RESEARCH USE ONLY [RUO] licence. This product must not be used as for diagnostic or other medical purposes.

St John's Laboratory Ltd, Knowledge Dock Business Centre, University Way, London, E16 2RD | Tel: 0208 223 3081