

Anti-ANXA7 antibody (271-320 aa) (STJ96738)

STJ96738

GENERAL INFORMATION

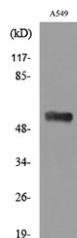
Product Type	Primary antibodies
Short Description	Rabbit polyclonal antibody anti-Annexin A7 (271-320 aa) is suitable for use in Western Blot, Immunohistochemistry, Immunofluorescence and ELISA research applications.
Applications	WB/IHC/IF/ELISA
Host/Source	Rabbit
Reactivity	Human/Mouse

PRODUCT PROPERTIES

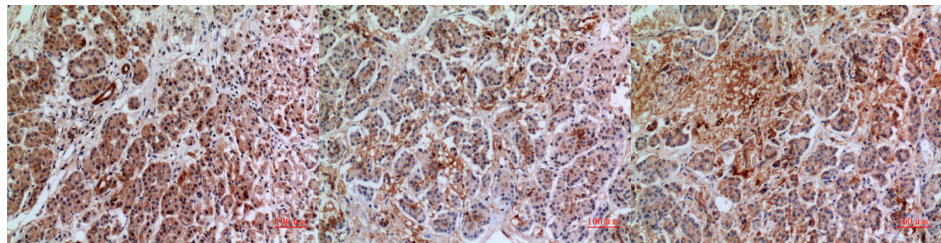
Clonality	Polyclonal
Clone ID	
Concentration	1 mg/mL
Conjugation	Unconjugated
Purification	The antibody was affinity-purified from rabbit antiserum by affinity-chromatography using epitope-specific immunogen.
Dilution Range	WB 1:500-1:2000 IHC-P 1:100-1:300 ELISA 1:20000 IF 1:50-200
Formulation	Liquid in PBS containing 50% Glycerol, 0.5% BSA and 0.02% Sodium Azide.
Isotype	IgG
Storage Instruction	Store at -20°C for up to 1 year from the date of receipt, and avoid repeat freeze-thaw cycles.

TARGET INFORMATION

Gene ID	310
Gene Symbol	ANXA7
Uniprot ID	ANXA7_HUMAN
Immunogen	The antiserum was produced against synthesized peptide derived from the Internal region of human ANXA7 at the amino acid range 271-320
Immunogen Region	271-320 aa
Specificity	Annexin VII Polyclonal Antibody detects endogenous levels of Annexin VII protein.
Immunogen Sequence	



Western blot analysis of lysate from A549 cells, using ANXA7 Antibody.



Immunohistochemical analysis of paraffin-embedded human-pancreas, antibody was diluted at 1:100

Immunohistochemical analysis of paraffin-embedded human-pancreas, antibody was diluted at 1:100

Immunohistochemical analysis of paraffin-embedded human-pancreas, antibody was diluted at 1:100

This product is suitable for in-vitro studies under the RESEARCH USE ONLY [RUO] licence. This product must not be used as for diagnostic or other medical purposes.
St John's Laboratory Ltd, Knowledge Dock Business Centre, University Way, London, E16 2RD | Tel: 0208 223 3081