

Anti-ANGPTL1 antibody (11-60 aa) (STJ96729)

STJ96729

GENERAL INFORMATION

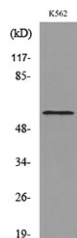
Product Type	Primary antibodies
Short Description	Rabbit polyclonal antibody anti-Angiopoietin-related protein 1 (11-60 aa) is suitable for use in Western Blot, Immunohistochemistry, Immunofluorescence and ELISA research applications.
Applications	WB/IHC/IF/ELISA
Host/Source	Rabbit
Reactivity	Human/Mouse/Rat

PRODUCT PROPERTIES

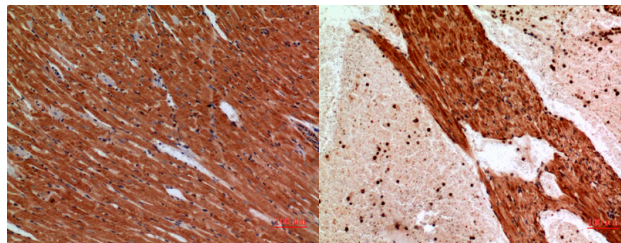
Clonality	Polyclonal
Clone ID	
Concentration	1 mg/mL
Conjugation	Unconjugated
Purification	The antibody was affinity-purified from rabbit antiserum by affinity-chromatography using epitope-specific immunogen.
Dilution Range	WB 1:500-1:2000 IHC-P 1:100-1:300 ELISA 1:20000 IF 1:50-200
Formulation	Liquid in PBS containing 50% Glycerol, 0.5% BSA and 0.02% Sodium Azide.
Isotype	IgG
Storage Instruction	Store at -20°C for up to 1 year from the date of receipt, and avoid repeat freeze-thaw cycles.

TARGET INFORMATION

Gene ID	9068
Gene Symbol	ANGPTL1
Uniprot ID	ANGL1_HUMAN
Immunogen	The antiserum was produced against synthesized peptide derived from the Internal region of human ANGPTL1 at the amino acid range 11-60
Immunogen Region	11-60 aa
Specificity	Angptl1 Polyclonal Antibody detects endogenous levels of Angptl1 protein.
Immunogen Sequence	



Western blot analysis of lysate from K562 cells, using ANGPTL1 Antibody.



Immunohistochemical analysis of paraffin-embedded mouse-heart, antibody was diluted at 1:100

Immunohistochemical analysis of paraffin-embedded mouse-heart, antibody was diluted at 1:100



Western blot analysis of K562 cells using Angptl1 Polyclonal Antibody. Secondary antibody was diluted at 1:20000

This product is suitable for in-vitro studies under the RESEARCH USE ONLY [RUO] licence. This product must not be used as for diagnostic or other medical purposes.
St John's Laboratory Ltd, Knowledge Dock Business Centre, University Way, London, E16 2RD | Tel: 0208 223 3081