

Anti-IGFBP6 antibody (101-150 aa) (STJ96726)

STJ96726

GENERAL INFORMATION

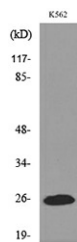
Product Type	Primary antibodies
Short Description	Rabbit polyclonal antibody anti-Insulin-like growth factor-binding protein 6 (101-150 aa) is suitable for use in Western Blot and ELISA research applications.
Applications	WB/ELISA
Host/Source	Rabbit
Reactivity	Human/Rat/Mouse

PRODUCT PROPERTIES

Clonality	Polyclonal
Clone ID	
Concentration	1 mg/mL
Conjugation	Unconjugated
Purification	The antibody was affinity-purified from rabbit antiserum by affinity-chromatography using epitope-specific immunogen.
Dilution Range	WB 1:500-1:2000 ELISA 1:20000
Formulation	Liquid in PBS containing 50% Glycerol, 0.5% BSA and 0.02% Sodium Azide.
Isotype	IgG
Storage	Store at -20°C for up to 1 year from the date of receipt, and avoid repeat freeze-thaw cycles.
Instruction	

TARGET INFORMATION

Gene ID	3489
Gene Symbol	IGFBP6
Uniprot ID	IBP6_HUMAN
Immunogen	The antiserum was produced against synthesized peptide derived from the Internal region of human IGFBP6 at the amino acid range 101-150
Immunogen Region	101-150 aa
Specificity	IGFBP6 Polyclonal Antibody detects endogenous levels of IGFBP6 protein.
Immunogen Sequence	



Western blot analysis of lysate from K562 cells, using IGFBP6 Antibody.



Western blot analysis of K562 cells using IGFBP6 Polyclonal Antibody. Secondary antibody was diluted at 1:20000

This product is suitable for in-vitro studies under the RESEARCH USE ONLY [RUO] licence. This product must not be used as for diagnostic or other medical purposes.
St John's Laboratory Ltd, Knowledge Dock Business Centre, University Way, London, E16 2RD | Tel: 0208 223 3081