

Anti-IFNL1 antibody (121-170 aa) (STJ96663)

STJ96663

GENERAL INFORMATION

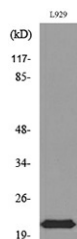
Product Type	Primary antibodies
Short Description	Rabbit polyclonal antibody anti-Interferon lambda-1 (121-170 aa) is suitable for use in Western Blot and ELISA research applications.
Applications	WB/ELISA
Host/Source	Rabbit
Reactivity	Human/Rat/Mouse

PRODUCT PROPERTIES

Clonality	Polyclonal
Clone ID	
Concentration	1 mg/mL
Conjugation	Unconjugated
Purification	The antibody was affinity-purified from rabbit antiserum by affinity-chromatography using epitope-specific immunogen.
Dilution Range	WB 1:500-1:2000 ELISA 1:20000
Formulation	Liquid in PBS containing 50% Glycerol, 0.5% BSA and 0.02% Sodium Azide.
Isotype	IgG
Storage Instruction	Store at -20°C for up to 1 year from the date of receipt, and avoid repeat freeze-thaw cycles.

TARGET INFORMATION

Gene ID	282618
Gene Symbol	IFNL1
Uniprot ID	IFNL1_HUMAN
Immunogen	The antiserum was produced against synthesized peptide derived from the Internal region of human IL29 at the amino acid range 121-170
Immunogen Region	121-170 aa
Specificity	IL-29 Polyclonal Antibody detects endogenous levels of IL-29 protein.
Immunogen Sequence	



Western blot analysis of lysate from L929 cells, using IL29 Antibody.



Western blot analysis of L929 cells using IL-29 Polyclonal Antibody. Secondary antibody was diluted at 1:20000

This product is suitable for in-vitro studies under the RESEARCH USE ONLY [RUO] licence. This product must not be used as for diagnostic or other medical purposes.
St John's Laboratory Ltd, Knowledge Dock Business Centre, University Way, London, E16 2RD | Tel: 0208 223 3081