

Anti-MACC1 antibody (411-460 aa) (STJ96657)

STJ96657

GENERAL INFORMATION

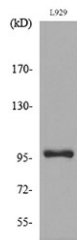
Product Type	Primary antibodies
Short Description	Rabbit polyclonal antibody anti-Metastasis-associated in colon cancer protein 1 (411-460 aa) is suitable for use in Western Blot and ELISA research applications.
Applications	WB/ELISA
Host/Source	Rabbit
Reactivity	Human/Mouse

PRODUCT PROPERTIES

Clonality	Polyclonal
Clone ID	
Concentration	1 mg/mL
Conjugation	Unconjugated
Purification	The antibody was affinity-purified from rabbit antiserum by affinity-chromatography using epitope-specific immunogen.
Dilution Range	WB 1:500-1:2000 ELISA 1:20000
Formulation	Liquid in PBS containing 50% Glycerol, 0.5% BSA and 0.02% Sodium Azide.
Isotype	IgG
Storage	Store at -20°C for up to 1 year from the date of receipt, and avoid repeat freeze-thaw cycles.
Instruction	

TARGET INFORMATION

Gene ID	346389
Gene Symbol	MACC1
Uniprot ID	MACC1_HUMAN
Immunogen	The antiserum was produced against synthesized peptide derived from the Internal region of human MACC1 at the amino acid range 411-460
Immunogen Region	411-460 aa
Specificity	MACC1 Polyclonal Antibody detects endogenous levels of MACC1 protein.
Immunogen Sequence	



Western blot analysis of lysate from L929 cells, using MACC1 Antibody.



Western blot analysis of L929 cells using MACC1 Polyclonal Antibody. Secondary antibody was diluted at 1:20000