

## Anti-CCR4 antibody (1-50 aa) (STJ96655)

STJ96655

### GENERAL INFORMATION

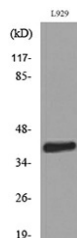
|                          |  |
|--------------------------|--|
| <b>Product Type</b>      | Primary antibodies   |
| <b>Short Description</b> | Rabbit polyclonal antibody anti-C-C chemokine receptor type 4 (1-50 aa) is suitable for use in Western Blot, Immunohistochemistry, Immunofluorescence and ELISA research applications. |
| <b>Applications</b>      | WB/IHC/IF/ELISA  |
| <b>Host/Source</b>       | Rabbit   |
| <b>Reactivity</b>        | Human/Mouse/Rat  |

### PRODUCT PROPERTIES

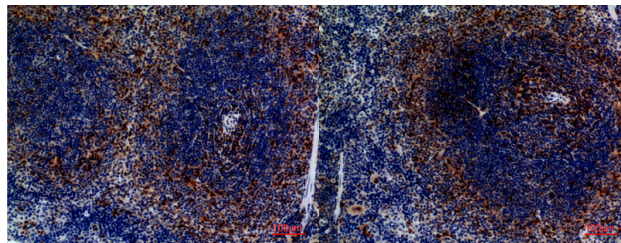
|                            |   |
|----------------------------|---|
| <b>Clonality</b>           | Polyclonal  |
| <b>Clone ID</b>            |   |
| <b>Concentration</b>       | 1 mg/mL   |
| <b>Conjugation</b>         | Unconjugated  |
| <b>Purification</b>        | The antibody was affinity-purified from rabbit antiserum by affinity-chromatography using epitope-specific immunogen. |
| <b>Dilution Range</b>      | WB 1:500-1:2000<br>IHC-P 1:100-300<br>ELISA 1:20000<br>IF 1:50-200  |
| <b>Formulation</b>         | Liquid in PBS containing 50% Glycerol, 0.5% BSA and 0.02% Sodium Azide.   |
| <b>Isotype</b>             | IgG   |
| <b>Storage Instruction</b> | Store at -20°C for up to 1 year from the date of receipt, and avoid repeat freeze-thaw cycles.                        |

### TARGET INFORMATION

|                           |  |
|---------------------------|--|
| <b>Gene ID</b>            | 1233   |
| <b>Gene Symbol</b>        | CCR4   |
| <b>Uniprot ID</b>         | CCR4_HUMAN   |
| <b>Immunogen</b>          | The antiserum was produced against synthesized peptide derived from the N-terminal region of human CCR4 at the amino acid range 1-50 |
| <b>Immunogen Region</b>   | 1-50 aa  |
| <b>Specificity</b>        | CCR-4 Polyclonal Antibody detects endogenous levels of CCR-4 protein.  |
| <b>Immunogen Sequence</b> |  |

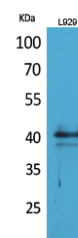


Western blot analysis of lysate from L929 cells, using CCR4 Antibody.



Immunohistochemical analysis of paraffin-embedded mouse-spleen, antibody was diluted at 1:100

Immunohistochemical analysis of paraffin-embedded mouse-spleen, antibody was diluted at 1:100



Western blot analysis of L929 cells using CCR-4 Polyclonal Antibody. Secondary antibody was diluted at 1:20000

This product is suitable for in-vitro studies under the RESEARCH USE ONLY [RUO] licence. This product must not be used as for diagnostic or other medical purposes.  
St John's Laboratory Ltd, Knowledge Dock Business Centre, University Way, London, E16 2RD | Tel: 0208 223 3081