

Anti-KLRB1 antibody (101-150 aa) (STJ96641)

STJ96641

GENERAL INFORMATION

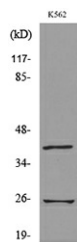
| | |
|--------------------------|---|
| Product Type | Primary antibodies |
| Short Description | Rabbit polyclonal antibody anti-Killer cell lectin-like receptor subfamily B member 1 (101-150 aa) is suitable for use in Western Blot and ELISA research applications. |
| Applications | WB/ELISA |
| Host/Source | Rabbit |
| Reactivity | Human/Rat/Mouse |

PRODUCT PROPERTIES

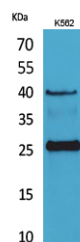
| | |
|-----------------------|---|
| Clonality | Polyclonal |
| Clone ID | |
| Concentration | 1 mg/mL |
| Conjugation | Unconjugated |
| Purification | The antibody was affinity-purified from rabbit antiserum by affinity-chromatography using epitope-specific immunogen. |
| Dilution Range | WB 1:500-1:2000 ELISA 1:20000 |
| Formulation | Liquid in PBS containing 50% Glycerol, 0.5% BSA and 0.02% Sodium Azide. |
| Isotype | IgG |
| Storage | Store at -20°C for up to 1 year from the date of receipt, and avoid repeat freeze-thaw cycles. |
| Instruction | |

TARGET INFORMATION

| | |
|---------------------------|--|
| Gene ID | 3820 |
| Gene Symbol | KLRB1 |
| Uniprot ID | KLRB1_HUMAN |
| Immunogen | The antiserum was produced against synthesized peptide derived from the Internal region of human KLRB1 at the amino acid range 101-150 |
| Immunogen Region | 101-150 aa |
| Specificity | CD161 Polyclonal Antibody detects endogenous levels of CD161 protein. |
| Immunogen Sequence | |



Western blot analysis of lysate from K562 cells, using KLRB1 Antibody.



Western blot analysis of K562 cells using CD161 Polyclonal Antibody. Secondary antibody was diluted at 1:20000