

## Anti-CD300LG antibody (41-90 aa) (STJ96637)

STJ96637

### GENERAL INFORMATION

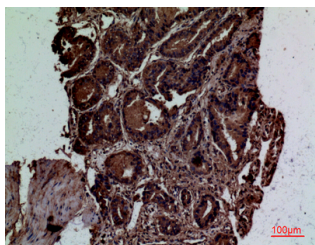
<b>Product Type</b>	Primary antibodies
<b>Short Description</b>	Rabbit polyclonal antibody anti-CMRF35-like molecule 9 (41-90 aa) is suitable for use in Western Blot, Immunohistochemistry, Immunofluorescence and ELISA research applications.
<b>Applications</b>	WB/IHC/IF/ELISA
<b>Host/Source</b>	Rabbit
<b>Reactivity</b>	Human/Rat/Mouse

### PRODUCT PROPERTIES

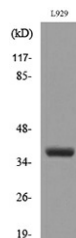
<b>Clonality</b>	Polyclonal
<b>Clone ID</b>	
<b>Concentration</b>	1 mg/mL
<b>Conjugation</b>	Unconjugated
<b>Purification</b>	The antibody was affinity-purified from rabbit antiserum by affinity-chromatography using epitope-specific immunogen.
<b>Dilution Range</b>	WB 1:500-1:2000 IHC-P 1:100-300 ELISA 1:20000 IF 1:50-200
<b>Formulation</b>	Liquid in PBS containing 50% Glycerol, 0.5% BSA and 0.02% Sodium Azide.
<b>Isotype</b>	IgG
<b>Storage Instruction</b>	Store at -20°C for up to 1 year from the date of receipt, and avoid repeat freeze-thaw cycles.

### TARGET INFORMATION

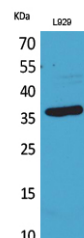
<b>Gene ID</b>	146894
<b>Gene Symbol</b>	CD300LG
<b>Uniprot ID</b>	CLM9_HUMAN
<b>Immunogen</b>	The antiserum was produced against synthesized peptide derived from the Internal region of human CD300LG at the amino acid range 41-90
<b>Immunogen Region</b>	41-90 aa
<b>Specificity</b>	CD300g Polyclonal Antibody detects endogenous levels of CD300g protein.
<b>Immunogen Sequence</b>	



Immunohistochemical analysis of paraffin-embedded human prostate cancer, antibody was diluted at 1:100



Western blot analysis of lysate from L929 cells, using CD300LG Antibody.



Western blot analysis of L929 cells using CD300g Polyclonal Antibody. Secondary antibody was diluted at 1:20000