

Anti-SEMA4D antibody (61-110 aa) (STJ96624)

STJ96624

GENERAL INFORMATION

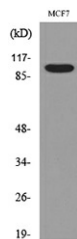
Product Type	Primary antibodies
Short Description	Rabbit polyclonal antibody anti-Semaphorin-4D (61-110 aa) is suitable for use in Western Blot and ELISA research applications.
Applications	WB/ELISA
Host/Source	Rabbit
Reactivity	Human/Mouse/Rat

PRODUCT PROPERTIES

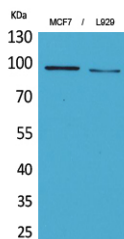
Clonality	Polyclonal
Clone ID	
Concentration	1 mg/mL
Conjugation	Unconjugated
Purification	The antibody was affinity-purified from rabbit antiserum by affinity-chromatography using epitope-specific immunogen.
Dilution Range	WB 1:500-1:2000 ELISA 1:20000
Formulation	Liquid in PBS containing 50% Glycerol, 0.5% BSA and 0.02% Sodium Azide.
Isotype	IgG
Storage Instruction	Store at -20°C for up to 1 year from the date of receipt, and avoid repeat freeze-thaw cycles.

TARGET INFORMATION

Gene ID	10507
Gene Symbol	SEMA4D
Uniprot ID	SEM4D_HUMAN
Immunogen	The antiserum was produced against synthesized peptide derived from the N-terminal region of human SEMA4D at the amino acid range 61-110
Immunogen Region	61-110 aa
Specificity	CD100 Polyclonal Antibody detects endogenous levels of CD100 protein.
Immunogen Sequence	



Western blot analysis of lysate from MCF7 cells, using SEMA4D Antibody.



Western blot analysis of MCF7, L929 cells using CD100 Polyclonal Antibody. Secondary antibody was diluted at 1:20000

This product is suitable for in-vitro studies under the RESEARCH USE ONLY [RUO] licence. This product must not be used as for diagnostic or other medical purposes.
St John's Laboratory Ltd, Knowledge Dock Business Centre, University Way, London, E16 2RD | Tel: 0208 223 3081