

Anti-CD68 antibody (171-220 aa) (STJ96575)

STJ96575

GENERAL INFORMATION

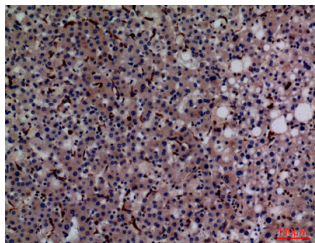
Product Type	Primary antibodies
Short Description	Rabbit polyclonal antibody anti-Macrosialin (171-220 aa) is suitable for use in Western Blot, Immunohistochemistry, Immunofluorescence and ELISA research applications.
Applications	WB/IHC/IF/ELISA
Host/Source	Rabbit
Reactivity	Human/Rat

PRODUCT PROPERTIES

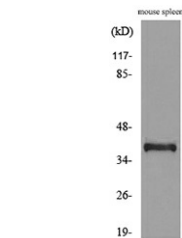
Clonality	Polyclonal
Clone ID	
Concentration	1 mg/mL
Conjugation	Unconjugated
Purification	The antibody was affinity-purified from rabbit antiserum by affinity-chromatography using epitope-specific immunogen.
Dilution Range	WB 1:500-1:2000 IHC-P 1:100-300 ELISA 1:20000 IF 1:50-200
Formulation	Liquid in PBS containing 50% Glycerol, 0.5% BSA and 0.02% Sodium Azide.
Isotype	IgG
Storage Instruction	Store at -20°C for up to 1 year from the date of receipt, and avoid repeat freeze-thaw cycles.

TARGET INFORMATION

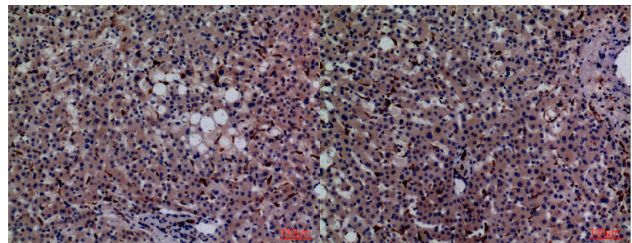
Gene ID	968
Gene Symbol	CD68
Uniprot ID	CD68_HUMAN
Immunogen	The antiserum was produced against synthesized peptide derived from the Internal region of human CD68 at the amino acid range 171-220
Immunogen Region	171-220 aa
Specificity	CD68 Polyclonal Antibody detects endogenous levels of CD68 protein.
Immunogen Sequence	



Immunohistochemical analysis of paraffin-embedded human liver, antibody was diluted at 1:100



Western blot analysis of lysate from mouse spleen cells, using CD68 Antibody.



Immunohistochemical analysis of paraffin-embedded human liver, antibody was diluted at 1:100

Immunohistochemical analysis of paraffin-embedded human liver, antibody was diluted at 1:100

This product is suitable for in-vitro studies under the RESEARCH USE ONLY [RUO] licence. This product must not be used as for diagnostic or other medical purposes.
St John's Laboratory Ltd, Knowledge Dock Business Centre, University Way, London, E16 2RD | Tel: 0208 223 3081