

Anti-FGF6 antibody (159-208 aa) (STJ96534)

STJ96534

GENERAL INFORMATION

Product Type	Primary antibodies
Short Description	Rabbit polyclonal antibody anti-Fibroblast growth factor 6 (159-208 aa) is suitable for use in Western Blot and ELISA research applications.
Applications	WB/ELISA
Host/Source	Rabbit
Reactivity	Human/Mouse/Rat

PRODUCT PROPERTIES

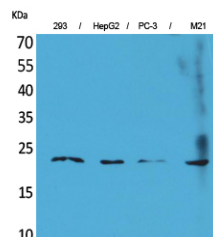
Clonality	Polyclonal
Clone ID	
Concentration	1 mg/mL
Conjugation	Unconjugated
Purification	The antibody was affinity-purified from rabbit antiserum by affinity-chromatography using epitope-specific immunogen.
Dilution Range	WB 1:500-1:2000 ELISA 1:20000
Formulation	Liquid in PBS containing 50% Glycerol, 0.5% BSA and 0.02% Sodium Azide.
Isotype	IgG
Storage Instruction	Store at -20°C for up to 1 year from the date of receipt, and avoid repeat freeze-thaw cycles.

TARGET INFORMATION

Gene ID	2251
Gene Symbol	FGF6
Uniprot ID	FGF6_HUMAN
Immunogen	The antiserum was produced against synthesized peptide derived from the C-terminal region of human FGF6 at the amino acid range 159-208
Immunogen Region	159-208 aa
Specificity	FGF-6 Polyclonal Antibody detects endogenous levels of FGF-6 protein.
Immunogen Sequence	



Western blot analysis of lysate from 293 cells, using FGF6 Antibody.



Western blot analysis of 293, HepG2, PC-3, M21 cells using FGF-6 Polyclonal Antibody. Secondary antibody was diluted at 1:20000

This product is suitable for in-vitro studies under the RESEARCH USE ONLY [RUO] licence. This product must not be used as for diagnostic or other medical purposes.
St John's Laboratory Ltd, Knowledge Dock Business Centre, University Way, London, E16 2RD | Tel: 0208 223 3081