

Anti-TFPI2 antibody (186-235 aa) (STJ96524)

STJ96524

GENERAL INFORMATION

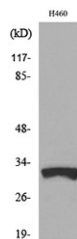
Product Type	Primary antibodies
Short Description	Rabbit polyclonal antibody anti-Tissue factor pathway inhibitor 2 (186-235 aa) is suitable for use in Western Blot and ELISA research applications.
Applications	WB/ELISA
Host/Source	Rabbit
Reactivity	Human/Rat/Mouse

PRODUCT PROPERTIES

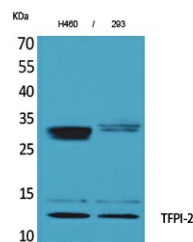
Clonality	Polyclonal
Clone ID	
Concentration	1 mg/mL
Conjugation	Unconjugated
Purification	The antibody was affinity-purified from rabbit antiserum by affinity-chromatography using epitope-specific immunogen.
Dilution Range	WB 1:500-1:2000 ELISA 1:20000
Formulation	Liquid in PBS containing 50% Glycerol, 0.5% BSA and 0.02% Sodium Azide.
Isotype	IgG
Storage Instruction	Store at -20°C for up to 1 year from the date of receipt, and avoid repeat freeze-thaw cycles.

TARGET INFORMATION

Gene ID	7980
Gene Symbol	TFPI2
Uniprot ID	TFPI2_HUMAN
Immunogen	The antiserum was produced against synthesized peptide derived from the C-terminal region of human TFPI2 at the amino acid range 186-235
Immunogen Region	186-235 aa
Specificity	TFPI-2 Polyclonal Antibody detects endogenous levels of TFPI-2 protein.
Immunogen Sequence	



Western blot analysis of lysate from H460 cells, using TFPI2 Antibody.



Western blot analysis of H460, 293 cells using TFPI-2 Polyclonal Antibody. Secondary antibody was diluted at 1:20000

This product is suitable for in-vitro studies under the RESEARCH USE ONLY [RUO] licence. This product must not be used as for diagnostic or other medical purposes.
St John's Laboratory Ltd, Knowledge Dock Business Centre, University Way, London, E16 2RD | Tel: 0208 223 3081