

Anti-CAT antibody (478-527 aa) (STJ96520)

STJ96520

GENERAL INFORMATION

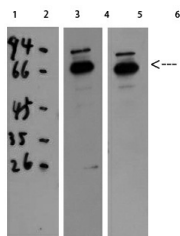
Product Type	Primary antibodies
Short Description	Rabbit polyclonal antibody anti-Catalase (478-527 aa) is suitable for use in Immunofluorescence, Western Blot, Immunohistochemistry and ELISA research applications.
Applications	IF/WB/IHC/ELISA
Host/Source	Rabbit
Reactivity	Human/Rat/Mouse/Fish

PRODUCT PROPERTIES

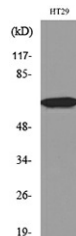
Clonality	Polyclonal
Clone ID	
Concentration	1 mg/mL
Conjugation	Unconjugated
Purification	The antibody was affinity-purified from rabbit antiserum by affinity-chromatography using epitope-specific immunogen.
Dilution Range	IF 1:50-200 WB 1:500-1:2000 IHC-P 1:100-300 ELISA 1:20000
Formulation	Liquid in PBS containing 50% Glycerol, 0.5% BSA and 0.02% Sodium Azide.
Isotype	IgG
Storage Instruction	Store at -20°C for up to 1 year from the date of receipt, and avoid repeat freeze-thaw cycles.

TARGET INFORMATION

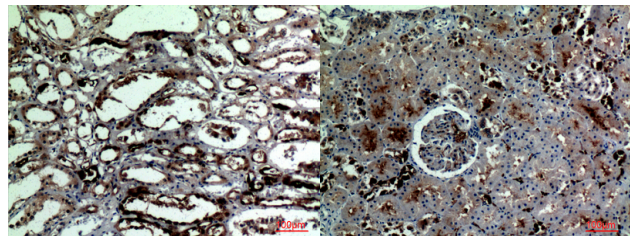
Gene ID	847
Gene Symbol	CAT
Uniprot ID	CATA_HUMAN
Immunogen	The antiserum was produced against synthesized peptide derived from the C-terminal region of human CAT at the amino acid range 478-527
Immunogen Region	478-527 aa
Specificity	Catalase Polyclonal Antibody detects endogenous levels of Catalase protein.
Immunogen Sequence	



Western blot analysis of 293T HELA using Catalase Polyclonal Antibody diluted at 1:1000. Secondary antibody was diluted at 1:20000



Western blot analysis of lysate from HT29 cells, using CAT Antibody.



Immunohistochemical analysis of paraffin-embedded human-kidney, antibody was diluted at 1:100

Immunohistochemical analysis of paraffin-embedded human-kidney, antibody was diluted at 1:100

This product is suitable for in-vitro studies under the RESEARCH USE ONLY [RUO] licence. This product must not be used as for diagnostic or other medical purposes.
St John's Laboratory Ltd, Knowledge Dock Business Centre, University Way, London, E16 2RD | Tel: 0208 223 3081