

## Anti-LXN antibody (90-170 aa) (STJ96499)

STJ96499

### GENERAL INFORMATION

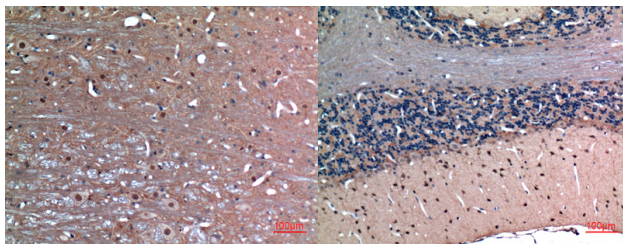
<b>Product Type</b>	Primary antibodies
<b>Short Description</b>	Rabbit polyclonal antibody anti-Latexin (90-170 aa) is suitable for use in Western Blot, Immunohistochemistry, Immunofluorescence and ELISA research applications.
<b>Applications</b>	WB/IHC/IF/ELISA
<b>Host/Source</b>	Rabbit
<b>Reactivity</b>	Human/Mouse/Rat

### PRODUCT PROPERTIES

<b>Clonality</b>	Polyclonal
<b>Clone ID</b>	
<b>Concentration</b>	1 mg/mL
<b>Conjugation</b>	Unconjugated
<b>Purification</b>	The antibody was affinity-purified from rabbit antiserum by affinity-chromatography using epitope-specific immunogen.
<b>Dilution Range</b>	WB 1:500-1:2000 IHC-P 1:100-300 ELISA 1:20000 IF 1:50-200
<b>Formulation</b>	Liquid in PBS containing 50% Glycerol, 0.5% BSA and 0.02% Sodium Azide.
<b>Isotype</b>	IgG
<b>Storage Instruction</b>	Store at -20°C for up to 1 year from the date of receipt, and avoid repeat freeze-thaw cycles.

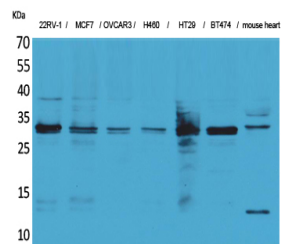
### TARGET INFORMATION

<b>Gene ID</b>	56925
<b>Gene Symbol</b>	LXN
<b>Uniprot ID</b>	LXN_HUMAN
<b>Immunogen</b>	Synthesized peptide derived from Latexin at the amino acid range 90-170
<b>Immunogen Region</b>	90-170 aa
<b>Specificity</b>	Latexin Polyclonal Antibody detects endogenous levels of Latexin protein.
<b>Immunogen Sequence</b>	



Immunohistochemical analysis of paraffin-embedded rat-brain, antibody was diluted at 1:100

Immunohistochemical analysis of paraffin-embedded rat-brain, antibody was diluted at 1:100



Western blot analysis of 22RV-1, MCF7, OVCAR3, H460, HT29, BT474, mouse heart cells using Latexin Polyclonal Antibody. Secondary antibody was diluted at 1:20000