

Anti-ACTC1 antibody (1-80 aa) (STJ96475)

STJ96475

GENERAL INFORMATION

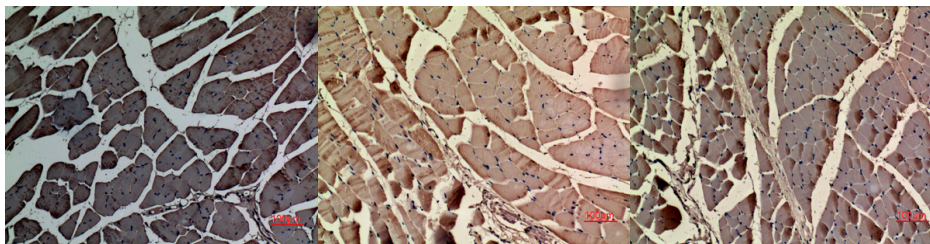
Product Type	Primary antibodies
Short Description	Rabbit polyclonal antibody anti-Actin, alpha cardiac muscle 1 (1-80 aa) is suitable for use in Western Blot, Immunohistochemistry, Immunofluorescence and ELISA research applications.
Applications	WB/IHC/IF/ELISA
Host/Source	Rabbit
Reactivity	Human/Mouse/Rat

PRODUCT PROPERTIES

Clonality	Polyclonal
Clone ID	
Concentration	1 mg/mL
Conjugation	Unconjugated
Purification	The antibody was affinity-purified from rabbit antiserum by affinity-chromatography using epitope-specific immunogen.
Dilution Range	WB 1:500-1:2000 IHC-P 1:100-300 ELISA 1:20000 IF 1:50-200
Formulation	Liquid in PBS containing 50% Glycerol, 0.5% BSA and 0.02% Sodium Azide.
Isotype	IgG
Storage Instruction	Store at -20°C for up to 1 year from the date of receipt, and avoid repeat freeze-thaw cycles.

TARGET INFORMATION

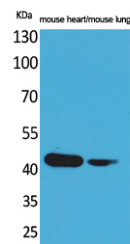
Gene ID	70
Gene Symbol	ACTC1
Uniprot ID	ACTC_HUMAN
Immunogen	Synthesized peptide derived from Actin-Alpha cardiac muscle at the amino acid range 1-80
Immunogen Region	1-80 aa
Specificity	Actin-Alpha cardiac muscle Polyclonal Antibody detects endogenous levels of Actin-Alpha cardiac muscle protein.
Immunogen Sequence	



Immunohistochemical analysis of paraffin-embedded mouse-muscle, antibody was diluted at 1:100

Immunohistochemical analysis of paraffin-embedded rat-muscle, antibody was diluted at 1:100

Immunohistochemical analysis of paraffin-embedded rat-muscle, antibody was diluted at 1:100



Western blot analysis of mouse heart, mouse lung cells using Actin-Alpha cardiac muscle Polyclonal Antibody. Secondary antibody was diluted at 1:20000

This product is suitable for in-vitro studies under the RESEARCH USE ONLY [RUO] licence. This product must not be used as for diagnostic or other medical purposes.
St John's Laboratory Ltd, Knowledge Dock Business Centre, University Way, London, E16 2RD | Tel: 0208 223 3081