

Anti-SLC34A2 antibody (630-710 aa) (STJ96469)

STJ96469

GENERAL INFORMATION

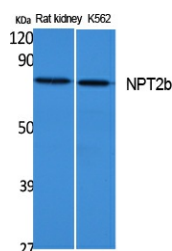
Product Type	Primary antibodies
Short Description	Rabbit polyclonal antibody anti-Sodium-dependent phosphate transport protein 2B-dependent phosphate cotransporter 2B/Pi cotransporter 2B (630-710 aa) is suitable for use in Western Blot and ELISA research applications.
Applications	WB/ELISA
Host/Source	Rabbit
Reactivity	Human/Rat

PRODUCT PROPERTIES

Clonality	Polyclonal
Clone ID	
Concentration	1 mg/mL
Conjugation	Unconjugated
Purification	The antibody was affinity-purified from rabbit antiserum by affinity-chromatography using epitope-specific immunogen.
Dilution	WB 1:500-1:2000
Range	ELISA 1:20000
Formulation	Liquid in PBS containing 50% Glycerol, 0.5% BSA and 0.02% Sodium Azide.
Isotype	IgG
Storage	Store at -20°C for up to 1 year from the date of receipt, and avoid repeat freeze-thaw cycles.
Instruction	

TARGET INFORMATION

Gene ID	10568
Gene Symbol	SLC34A2
Uniprot ID	NPT2B_HUMAN
Immunogen	Synthesized peptide derived from NPT2b at the amino acid range 630-710
Immunogen Region	630-710 aa
Specificity	NPT2b Polyclonal Antibody detects endogenous levels of NPT2b protein.
Immunogen Sequence	



Western blot analysis of extracts from rat kidney, K562 cells, using NPT2b Polyclonal Antibody. Secondary antibody was diluted at 1:20000

This product is suitable for in-vitro studies under the RESEARCH USE ONLY [RUO] licence. This product must not be used as for diagnostic or other medical purposes.
St John's Laboratory Ltd, Knowledge Dock Business Centre, University Way, London, E16 2RD | Tel: 0208 223 3081