

## Anti-SLC8A1 antibody (270-350 aa) (STJ96468)

STJ96468

### GENERAL INFORMATION

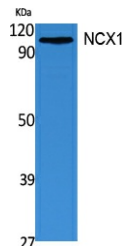
<b>Product Type</b>	Primary antibodies
<b>Short Description</b>	Rabbit polyclonal antibody anti-Sodium/calcium exchanger 1/Ca2+-exchange protein 1 (270-350 aa) is suitable for use in Western Blot and ELISA research applications.
<b>Applications</b>	WB/ELISA
<b>Host/Source</b>	Rabbit
<b>Reactivity</b>	Human/Mouse/Rat

### PRODUCT PROPERTIES

<b>Clonality</b>	Polyclonal
<b>Clone ID</b>	
<b>Concentration</b>	1 mg/mL
<b>Conjugation</b>	Unconjugated
<b>Purification</b>	The antibody was affinity-purified from rabbit antiserum by affinity-chromatography using epitope-specific immunogen.
<b>Dilution Range</b>	WB 1:500-1:2000 ELISA 1:5000
<b>Formulation</b>	Liquid in PBS containing 50% Glycerol, 0.5% BSA and 0.02% Sodium Azide.
<b>Isotype</b>	IgG
<b>Storage</b>	Store at -20°C for up to 1 year from the date of receipt, and avoid repeat freeze-thaw cycles.
<b>Instruction</b>	

### TARGET INFORMATION

<b>Gene ID</b>	6546
<b>Gene Symbol</b>	SLC8A1
<b>Uniprot ID</b>	NAC1_HUMAN
<b>Immunogen</b>	Synthesized peptide derived from NCX1 at the amino acid range 270-350
<b>Immunogen Region</b>	270-350 aa
<b>Specificity</b>	NCX1 Polyclonal Antibody detects endogenous levels of NCX1 protein.
<b>Immunogen Sequence</b>	



Western blot analysis of extracts from 293 cells, using NCX1 Polyclonal Antibody. Secondary antibody was diluted at 1:20000