

Anti-SLC6A14 antibody (C-Term) (STJ96467)

STJ96467

GENERAL INFORMATION

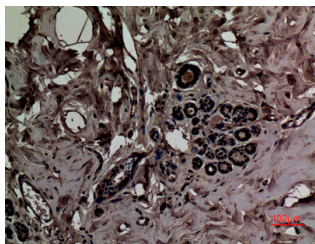
Product Type	Primary antibodies
Short Description	Rabbit polyclonal antibody anti-Sodium-and chloride-dependent neutral and basic amino acid transporter B0+ (C-Term) is suitable for use in Western Blot, Immunohistochemistry, Immunofluorescence and ELISA research applications.
Applications	WB/IHC/IF/ELISA
Host/Source	Rabbit
Reactivity	Human/Rat/Mouse

PRODUCT PROPERTIES

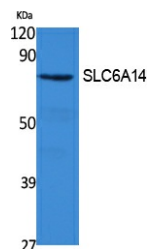
Clonality	Polyclonal
Clone ID	
Concentration	1 mg/mL
Conjugation	Unconjugated
Purification	The antibody was affinity-purified from rabbit antiserum by affinity-chromatography using epitope-specific immunogen.
Dilution	WB 1:500-1:2000
Range	IHC-P 1:100-300 ELISA 1:40000 IF 1:50-200
Formulation	Liquid in PBS containing 50% Glycerol, 0.5% BSA and 0.02% Sodium Azide.
Isotype	IgG
Storage	Store at -20°C for up to 1 year from the date of receipt, and avoid repeat freeze-thaw cycles.
Instruction	

TARGET INFORMATION

Gene ID	11254
Gene Symbol	SLC6A14
Uniprot ID	S6A14_HUMAN
Immunogen	Synthesized peptide derived from the C-terminal region of human SLC6A14.
Immunogen	C-Term
Region	
Specificity	SLC6A14 Polyclonal Antibody detects endogenous levels of SLC6A14 protein.
Immunogen	
Sequence	



Immunohistochemical analysis of paraffin-embedded human breast, antibody was diluted at 1:100



Western blot analysis of extracts from 293 cells, using SLC6A14 Polyclonal Antibody. Secondary antibody was diluted at 1:20000