

Anti-ATP12A antibody (380-460 aa) (STJ96464)

STJ96464

GENERAL INFORMATION

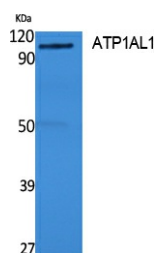
Product Type	Primary antibodies
Short Description	Rabbit polyclonal antibody anti-Potassium-transporting ATPase alpha chain 2/K+ ATPase subunit alpha/K+ ATPase subunit alpha (380-460 aa) is suitable for use in Western Blot and ELISA research applications.
Applications	WB/ELISA
Host/Source	Rabbit
Reactivity	Human/Rat

PRODUCT PROPERTIES

Clonality	Polyclonal
Clone ID	
Concentration	1 mg/mL
Conjugation	Unconjugated
Purification	The antibody was affinity-purified from rabbit antiserum by affinity-chromatography using epitope-specific immunogen.
Dilution	WB 1:500-1:2000
Range	ELISA 1:20000
Formulation	Liquid in PBS containing 50% Glycerol, 0.5% BSA and 0.02% Sodium Azide.
Isotype	IgG
Storage	Store at -20°C for up to 1 year from the date of receipt, and avoid repeat freeze-thaw cycles.
Instruction	

TARGET INFORMATION

Gene ID	479
Gene Symbol	ATP12A
Uniprot ID	AT12A_HUMAN
Immunogen	Synthesized peptide derived from ATP1AL1 at the amino acid range 380-460
Immunogen Region	380-460 aa
Specificity	ATP1AL1 Polyclonal Antibody detects endogenous levels of ATP1AL1 protein.
Immunogen Sequence	



Western blot analysis of extracts from rat stomach, using ATP1AL1 Polyclonal Antibody. Secondary antibody was diluted at 1:20000

This product is suitable for in-vitro studies under the RESEARCH USE ONLY [RUO] licence. This product must not be used as for diagnostic or other medical purposes.
St John's Laboratory Ltd, Knowledge Dock Business Centre, University Way, London, E16 2RD | Tel: 0208 223 3081