

## Anti-ZNF227 antibody (Internal) (STJ96450)

STJ96450

### GENERAL INFORMATION

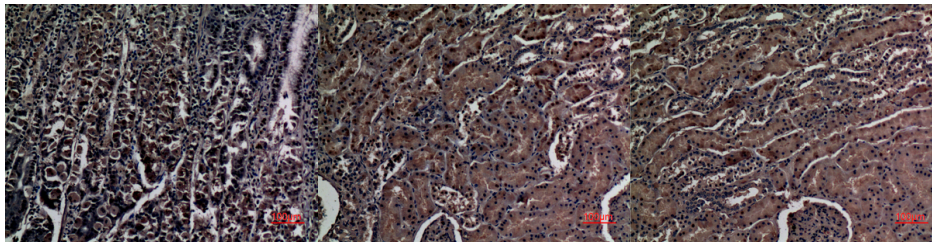
<b>Product Type</b>	Primary antibodies
<b>Short Description</b>	Rabbit polyclonal antibody anti-Zinc finger protein 227 (Internal) is suitable for use in Western Blot, Immunohistochemistry, Immunofluorescence and ELISA research applications.
<b>Applications</b>	WB/IHC/IF/ELISA
<b>Host/Source</b>	Rabbit
<b>Reactivity</b>	Human/Rat/Mouse

### PRODUCT PROPERTIES

<b>Clonality</b>	Polyclonal
<b>Clone ID</b>	
<b>Concentration</b>	1 mg/mL
<b>Conjugation</b>	Unconjugated
<b>Purification</b>	The antibody was affinity-purified from rabbit antiserum by affinity-chromatography using epitope-specific immunogen.
<b>Dilution Range</b>	WB 1:500-1:2000 IHC-P 1:100-300 ELISA 1:40000 IF 1:50-200
<b>Formulation</b>	Liquid in PBS containing 50% Glycerol, 0.5% BSA and 0.02% Sodium Azide.
<b>Isotype</b>	IgG
<b>Storage Instruction</b>	Store at -20°C for up to 1 year from the date of receipt, and avoid repeat freeze-thaw cycles.

### TARGET INFORMATION

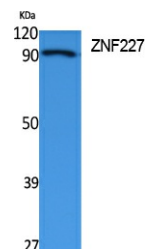
<b>Gene ID</b>	7770
<b>Gene Symbol</b>	ZNF227
<b>Uniprot ID</b>	ZN227_HUMAN
<b>Immunogen</b>	Synthesized peptide derived from the Internal region of human ZNF227.
<b>Immunogen Region</b>	Internal
<b>Specificity</b>	ZNF227 Polyclonal Antibody detects endogenous levels of ZNF227 protein.
<b>Immunogen Sequence</b>	



Immunohistochemical analysis of paraffin-embedded human-stomach, antibody was diluted at 1:100

Immunohistochemical analysis of paraffin-embedded human-kidney, antibody was diluted at 1:100

Immunohistochemical analysis of paraffin-embedded human-kidney, antibody was diluted at 1:100



This product is suitable for in-vitro studies under the RESEARCH USE ONLY [RUO] licence. This product must not be used as for diagnostic or other medical purposes.  
St John's Laboratory Ltd, Knowledge Dock Business Centre, University Way, London, E16 2RD | Tel: 0208 223 3081