

Anti-UBE2A/B antibody (C-Term) (STJ96446)

STJ96446

GENERAL INFORMATION

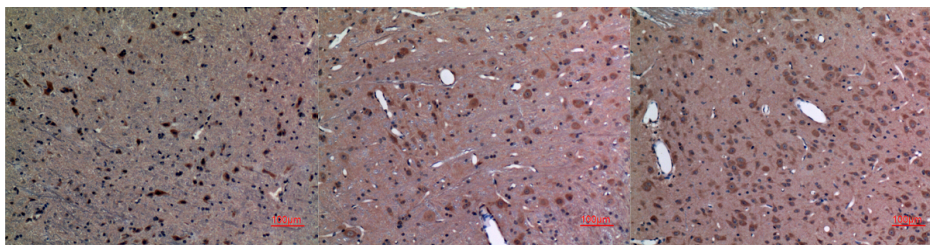
Product Type	Primary antibodies
Short Description	Rabbit polyclonal antibody anti-Ubiquitin-conjugating enzyme E2 A and Ubiquitin-conjugating enzyme E2 B (C-Term) is suitable for use in Western Blot, Immunohistochemistry, Immunofluorescence and ELISA research applications.
Applications	WB/IHC/IF/ELISA
Host/Source	Rabbit
Reactivity	Human/Mouse/Rat

PRODUCT PROPERTIES

Clonality	Polyclonal
Clone ID	
Concentration	1 mg/mL
Conjugation	Unconjugated
Purification	The antibody was affinity-purified from rabbit antiserum by affinity-chromatography using epitope-specific immunogen.
Dilution Range	WB 1:500-1:2000 IHC-P 1:100-300 ELISA 1:10000 IF 1:50-200
Formulation	Liquid in PBS containing 50% Glycerol, 0.5% BSA and 0.02% Sodium Azide.
Isotype	IgG
Storage Instruction	Store at -20°C for up to 1 year from the date of receipt, and avoid repeat freeze-thaw cycles.

TARGET INFORMATION

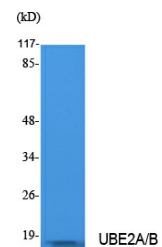
Gene ID	7319 7320
Gene Symbol	UBE2A UBE2B
Uniprot ID	UBE2A_HUMAN UBE2B_HUMAN
Immunogen	Synthesized peptide derived from the C-terminal region of human UBE2A/B.
Immunogen Region	C-Term
Specificity	UBE2A/B Polyclonal Antibody detects endogenous levels of UBE2A/B protein.
Immunogen Sequence	



Immunohistochemical analysis of paraffin-embedded mouse-brain, antibody was diluted at 1:100

Immunohistochemical analysis of paraffin-embedded rat-brain, antibody was diluted at 1:100

Immunohistochemical analysis of paraffin-embedded human-brain, antibody was diluted at 1:100



Western blot analysis of extracts from Jurkat cells, using UBE2A/B Polyclonal Antibody. Secondary antibody was diluted at 1:20000

This product is suitable for in-vitro studies under the RESEARCH USE ONLY [RUO] licence. This product must not be used as for diagnostic or other medical purposes.

St John's Laboratory Ltd, Knowledge Dock Business Centre, University Way, London, E16 2RD | Tel: 0208 223 3081