

Anti-ABCG1 antibody (560-640 aa) (STJ96425)

STJ96425

GENERAL INFORMATION

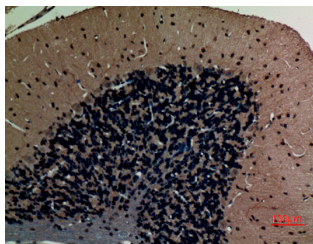
Product Type	Primary antibodies
Short Description	Rabbit polyclonal antibody anti-ATP-binding cassette sub-family G member 1 (560-640 aa) is suitable for use in Western Blot, Immunohistochemistry, Immunofluorescence and ELISA research applications.
Applications	WB/IHC/IF/ELISA
Host/Source	Rabbit
Reactivity	Human/Mouse/Rat

PRODUCT PROPERTIES

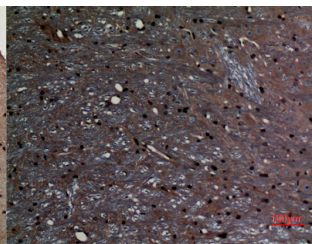
Clonality	Polyclonal
Clone ID	
Concentration	1 mg/mL
Conjugation	Unconjugated
Purification	The antibody was affinity-purified from rabbit antiserum by affinity-chromatography using epitope-specific immunogen.
Dilution	WB 1:500-1:2000
Range	IHC-P 1:100-300 ELISA 1:10000 IF 1:50-200
Formulation	Liquid in PBS containing 50% Glycerol, 0.5% BSA and 0.02% Sodium Azide.
Isotype	IgG
Storage Instruction	Store at -20°C for up to 1 year from the date of receipt, and avoid repeat freeze-thaw cycles.

TARGET INFORMATION

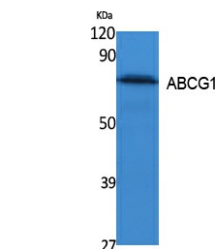
Gene ID	9619
Gene Symbol	ABCG1
Uniprot ID	ABCG1_HUMAN
Immunogen	Synthesized peptide derived from ABCG1 at the amino acid range 560-640
Immunogen	560-640 aa
Region	
Specificity	ABCG1 Polyclonal Antibody detects endogenous levels of ABCG1 protein.
Immunogen Sequence	



Immunohistochemical analysis of paraffin-embedded rat-brain, antibody was diluted at 1:100



Immunohistochemical analysis of paraffin-embedded rat-brain, antibody was diluted at 1:100



Western blot analysis of extracts from K562 cells, using ABCG1 Polyclonal Antibody. Secondary antibody was diluted at 1:20000