

Anti-GDI1 antibody (394-443 aa) (STJ96399)

STJ96399

GENERAL INFORMATION

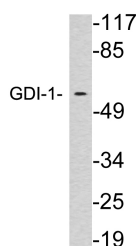
Product Type	Primary antibodies
Short Description	Rabbit polyclonal antibody anti-Rab GDP dissociation inhibitor alpha (394-443 aa) is suitable for use in Western Blot and ELISA research applications.
Applications	WB/ELISA
Host/Source	Rabbit
Reactivity	Human/Mouse/Rat

PRODUCT PROPERTIES

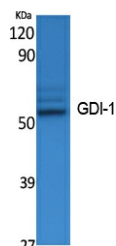
Clonality	Polyclonal
Clone ID	
Concentration	1 mg/mL
Conjugation	Unconjugated
Purification	The antibody was affinity-purified from rabbit antiserum by affinity-chromatography using epitope-specific immunogen.
Dilution Range	WB 1:500-1:2000 ELISA 1:20000
Formulation	Liquid in PBS containing 50% Glycerol, 0.5% BSA and 0.02% Sodium Azide.
Isotype	IgG
Storage	Store at -20°C for up to 1 year from the date of receipt, and avoid repeat freeze-thaw cycles.
Instruction	

TARGET INFORMATION

Gene ID	2664
Gene Symbol	GDI1
Uniprot ID	GDIA_HUMAN
Immunogen	The antiserum was produced against synthesized peptide derived from the human GDI-1 at the amino acid range 394-443
Immunogen Region	394-443 aa
Specificity	GDI-1 Polyclonal Antibody detects endogenous levels of GDI-1 protein.
Immunogen Sequence	



Western blot analysis of lysates from brain tissue, using GDI-1 antibody.



Western blot analysis of extracts from K562 cells, using GDI-1 Polyclonal Antibody. Secondary antibody was diluted at 1:20000

This product is suitable for in-vitro studies under the RESEARCH USE ONLY [RUO] licence. This product must not be used as for diagnostic or other medical purposes.
St John's Laboratory Ltd, Knowledge Dock Business Centre, University Way, London, E16 2RD | Tel: 0208 223 3081