

Anti-SLC29A1 antibody (15-64 aa) (STJ96396)

STJ96396

GENERAL INFORMATION

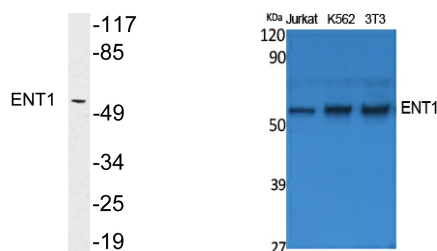
Product Type	Primary antibodies
Short Description	Rabbit polyclonal antibody anti-Equilibrative nucleoside transporter 1 (15-64 aa) is suitable for use in Western Blot and ELISA research applications.
Applications	WB/ELISA
Host/Source	Rabbit
Reactivity	Human/Mouse/Rat

PRODUCT PROPERTIES

Clonality	Polyclonal
Clone ID	
Concentration	1 mg/mL
Conjugation	Unconjugated
Purification	The antibody was affinity-purified from rabbit antiserum by affinity-chromatography using epitope-specific immunogen.
Dilution Range	WB 1:500-1:2000 ELISA 1:20000
Formulation	Liquid in PBS containing 50% Glycerol, 0.5% BSA and 0.02% Sodium Azide.
Isotype	IgG
Storage	Store at -20°C for up to 1 year from the date of receipt, and avoid repeat freeze-thaw cycles.
Instruction	

TARGET INFORMATION

Gene ID	2030
Gene Symbol	SLC29A1
Uniprot ID	S29A1_HUMAN
Immunogen	The antiserum was produced against synthesized peptide derived from the human ENT1 at the amino acid range 15-64
Immunogen Region	15-64 aa
Specificity	ENT1 Polyclonal Antibody detects endogenous levels of ENT1 protein.
Immunogen Sequence	



Western blot analysis of lysates from MDA-MB-435 cells, using ENT1 antibody.

Western blot analysis of extracts from Jurkat, K562, NIH-3T3 cells, using ENT1 Polyclonal Antibody. Antibody was diluted at 1:2000. Secondary antibody was diluted at 1:20000.

This product is suitable for in-vitro studies under the RESEARCH USE ONLY [RUO] licence. This product must not be used as for diagnostic or other medical purposes.
St John's Laboratory Ltd, Knowledge Dock Business Centre, University Way, London, E16 2RD | Tel: 0208 223 3081