

## Anti-ALPK1 antibody (11-60 aa) (STJ96366)

STJ96366

### GENERAL INFORMATION

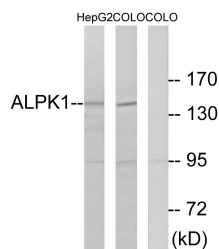
<b>Product Type</b>	Primary antibodies
<b>Short Description</b>	Rabbit polyclonal antibody anti-Alpha-protein kinase 1 (11-60 aa) is suitable for use in Western Blot, Immunohistochemistry, Immunofluorescence and ELISA research applications.
<b>Applications</b>	WB/IHC/IF/ELISA
<b>Host/Source</b>	Rabbit
<b>Reactivity</b>	Human/Mouse

### PRODUCT PROPERTIES

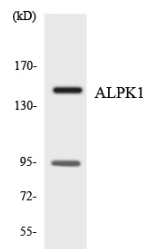
<b>Clonality</b>	Polyclonal
<b>Clone ID</b>	
<b>Concentration</b>	1 mg/mL
<b>Conjugation</b>	Unconjugated
<b>Purification</b>	The antibody was affinity-purified from rabbit antiserum by affinity-chromatography using epitope-specific immunogen.
<b>Dilution Range</b>	WB 1:500-1:2000 IHC 1:100-1:300 IF 1:200-1:1000 ELISA 1:20000
<b>Formulation</b>	Liquid in PBS containing 50% Glycerol, 0.5% BSA and 0.02% Sodium Azide.
<b>Isotype</b>	IgG
<b>Storage Instruction</b>	Store at -20°C for up to 1 year from the date of receipt, and avoid repeat freeze-thaw cycles.

### TARGET INFORMATION

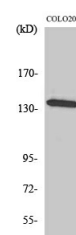
<b>Gene ID</b>	80216
<b>Gene Symbol</b>	ALPK1
<b>Uniprot ID</b>	ALPK1_HUMAN
<b>Immunogen</b>	The antiserum was produced against synthesized peptide derived from the human ALPK1 at the amino acid range 11-60
<b>Immunogen Region</b>	11-60 aa
<b>Specificity</b>	Alpha-protein Kinase 1 Polyclonal Antibody detects endogenous levels of Alpha-protein Kinase 1 protein.
<b>Immunogen Sequence</b>	



Western blot analysis of lysates from COLO and HepG2 cells, using ALPK1 Antibody. The lane on the right is blocked with the synthesized peptide.



Western blot analysis of the lysates from 293 cells using ALPK1 antibody.



Western blot analysis of various cells using Alpha-protein Kinase 1 Polyclonal Antibody. Secondary antibody was diluted at 1:20000.