

Anti-ZZZ3 antibody (341-390 aa) (STJ96364)

STJ96364

GENERAL INFORMATION

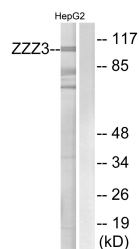
Product Type	Primary antibodies
Short Description	Rabbit polyclonal antibody anti-ZZ-type zinc finger-containing protein 3 (341-390 aa) is suitable for use in Western Blot and ELISA research applications.
Applications	WB/ELISA
Host/Source	Rabbit
Reactivity	Human/Mouse/Rat

PRODUCT PROPERTIES

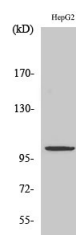
Clonality	Polyclonal
Clone ID	
Concentration	1 mg/mL
Conjugation	Unconjugated
Purification	The antibody was affinity-purified from rabbit antiserum by affinity-chromatography using epitope-specific immunogen.
Dilution Range	WB 1:500-1:2000 ELISA 1:5000
Formulation	Liquid in PBS containing 50% Glycerol, 0.5% BSA and 0.02% Sodium Azide.
Isotype	IgG
Storage	Store at -20°C for up to 1 year from the date of receipt, and avoid repeat freeze-thaw cycles.
Instruction	

TARGET INFORMATION

Gene ID	26009
Gene Symbol	ZZZ3
Uniprot ID	ZZZ3_HUMAN
Immunogen	The antiserum was produced against synthesized peptide derived from the human ZZZ3 at the amino acid range 341-390
Immunogen Region	341-390 aa
Specificity	ZZZ3 Polyclonal Antibody detects endogenous levels of ZZZ3 protein.
Immunogen Sequence	



Western blot analysis of lysates from HepG2 cells, using ZZZ3 Antibody. The lane on the right is blocked with the synthesized peptide.



Western blot analysis of various cells using ZZZ3 Polyclonal Antibody. Secondary antibody was diluted at 1:20000 cells nucleus extracted by Minute™ Cytoplasmic and Nuclear Fractionation kit (SC-003, Inventiotech, MN, USA).

This product is suitable for in-vitro studies under the RESEARCH USE ONLY [RUO] licence. This product must not be used as for diagnostic or other medical purposes.
St John's Laboratory Ltd, Knowledge Dock Business Centre, University Way, London, E16 2RD | Tel: 0208 223 3081