

Anti-ZSCAN16 antibody (191-240 aa) (STJ96362)

STJ96362

GENERAL INFORMATION

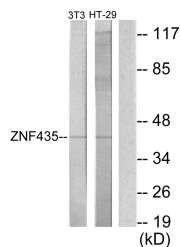
Product Type	Primary antibodies
Short Description	Rabbit polyclonal antibody anti-Zinc finger and SCAN domain-containing protein 16 (191-240 aa) is suitable for use in Western Blot, Immunohistochemistry, Immunofluorescence and ELISA research applications.
Applications	WB/IHC/IF/ELISA
Host/Source	Rabbit
Reactivity	Human/Mouse

PRODUCT PROPERTIES

Clonality	Polyclonal
Clone ID	
Concentration	1 mg/mL
Conjugation	Unconjugated
Purification	The antibody was affinity-purified from rabbit antiserum by affinity-chromatography using epitope-specific immunogen.
Dilution Range	WB 1:500-1:2000 IHC 1:100-1:300 IF 1:200-1:1000 ELISA 1:20000
Formulation	Liquid in PBS containing 50% Glycerol, 0.5% BSA and 0.02% Sodium Azide.
Isotype	IgG
Storage Instruction	Store at -20°C for up to 1 year from the date of receipt, and avoid repeat freeze-thaw cycles.

TARGET INFORMATION

Gene ID	80345
Gene Symbol	ZSCAN16
Uniprot ID	ZSCAN16_HUMAN
Immunogen	The antiserum was produced against synthesized peptide derived from the human ZNF435 at the amino acid range 191-240
Immunogen Region	191-240 aa
Specificity	ZSCAN16 Polyclonal Antibody detects endogenous levels of ZSCAN16 protein.
Immunogen Sequence	



Western blot analysis of lysates from NIH/3T3 and HT-29 cells, using ZNF435 Antibody. The lane on the right is blocked with the synthesized peptide.