

Anti-ZP4 antibody (231-280 aa) (STJ96361)

STJ96361

GENERAL INFORMATION

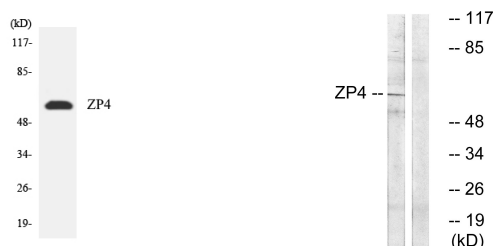
Product Type	Primary antibodies
Short Description	Rabbit polyclonal antibody anti-Zona pellucida sperm-binding protein 4 (231-280 aa) is suitable for use in Western Blot and ELISA research applications.
Applications	WB/ELISA
Host/Source	Rabbit
Reactivity	Human/Rat/Mouse

PRODUCT PROPERTIES

Clonality	Polyclonal
Clone ID	
Concentration	1 mg/mL
Conjugation	Unconjugated
Purification	The antibody was affinity-purified from rabbit antiserum by affinity-chromatography using epitope-specific immunogen.
Dilution Range	WB 1:500-1:2000 ELISA 1:10000
Formulation	Liquid in PBS containing 50% Glycerol, 0.5% BSA and 0.02% Sodium Azide.
Isotype	IgG
Storage	Store at -20°C for up to 1 year from the date of receipt, and avoid repeat freeze-thaw cycles.
Instruction	

TARGET INFORMATION

Gene ID	57829
Gene Symbol	ZP4
Uniprot ID	ZP4_HUMAN
Immunogen	The antiserum was produced against synthesized peptide derived from the human ZP4 at the amino acid range 231-280
Immunogen Region	231-280 aa
Specificity	ZP4 Polyclonal Antibody detects endogenous levels of ZP4 protein.
Immunogen Sequence	



Western blot analysis of the lysates from HepG2 cells using ZP4 antibody.

Western blot analysis of lysates from Jurkat cells, using ZP4 Antibody. The lane on the right is blocked with the synthesized peptide.

This product is suitable for in-vitro studies under the RESEARCH USE ONLY [RUO] licence. This product must not be used as for diagnostic or other medical purposes.
St John's Laboratory Ltd, Knowledge Dock Business Centre, University Way, London, E16 2RD | Tel: 0208 223 3081