

Anti-SLC30A1 antibody (201-250 aa) (STJ96352)

STJ96352

GENERAL INFORMATION

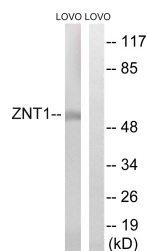
Product Type	Primary antibodies
Short Description	Rabbit polyclonal antibody anti-Proton-coupled zinc antiporter SLC30A1 (201-250 aa) is suitable for use in Western Blot, Immunohistochemistry, Immunofluorescence and ELISA research applications.
Applications	WB/IHC/IF/ELISA
Host/Source	Rabbit
Reactivity	Human/Rat/Mouse

PRODUCT PROPERTIES

Clonality	Polyclonal
Clone ID	
Concentration	1 mg/mL
Conjugation	Unconjugated
Purification	The antibody was affinity-purified from rabbit antiserum by affinity-chromatography using epitope-specific immunogen.
Dilution	WB 1:500-1:2000
Range	IHC 1:100-1:300 ELISA 1:5000 IF 1:50-200
Formulation	Liquid in PBS containing 50% Glycerol, 0.5% BSA and 0.02% Sodium Azide.
Isotype	IgG
Storage Instruction	Store at -20°C for up to 1 year from the date of receipt, and avoid repeat freeze-thaw cycles.

TARGET INFORMATION

Gene ID	7779
Gene Symbol	SLC30A1
Uniprot ID	ZNT1_HUMAN
Immunogen	The antiserum was produced against synthesized peptide derived from the human SLC30A1 at the amino acid range 201-250
Immunogen Region	201-250 aa
Specificity	ZnT-1 Polyclonal Antibody detects endogenous levels of ZnT-1 protein.
Immunogen Sequence	



Western blot analysis of lysates from LOVO cells, using SLC30A1 Antibody. The lane on the right is blocked with the synthesized peptide.