

## Anti-SLC39A9 antibody (101-150 aa) (STJ96316)

STJ96316

### GENERAL INFORMATION

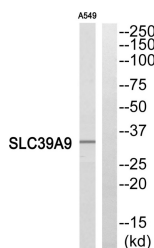
<b>Product Type</b>	Primary antibodies
<b>Short Description</b>	Rabbit polyclonal antibody anti-Zinc transporter ZIP9 (101-150 aa) is suitable for use in Western Blot and ELISA research applications.
<b>Applications</b>	WB/ELISA
<b>Host/Source</b>	Rabbit
<b>Reactivity</b>	Human/Rat

### PRODUCT PROPERTIES

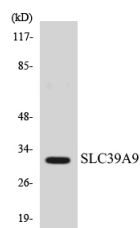
<b>Clonality</b>	Polyclonal
<b>Clone ID</b>	
<b>Concentration</b>	1 mg/mL
<b>Conjugation</b>	Unconjugated
<b>Purification</b>	The antibody was affinity-purified from rabbit antiserum by affinity-chromatography using epitope-specific immunogen.
<b>Dilution Range</b>	WB 1:500-1:2000 ELISA 1:10000
<b>Formulation</b>	Liquid in PBS containing 50% Glycerol, 0.5% BSA and 0.02% Sodium Azide.
<b>Isotype</b>	IgG
<b>Storage Instruction</b>	Store at -20°C for up to 1 year from the date of receipt, and avoid repeat freeze-thaw cycles.

### TARGET INFORMATION

<b>Gene ID</b>	55334
<b>Gene Symbol</b>	SLC39A9
<b>Uniprot ID</b>	S39A9_HUMAN
<b>Immunogen</b>	The antiserum was produced against synthesized peptide derived from the human SLC39A9 at the amino acid range 101-150
<b>Immunogen Region</b>	101-150 aa
<b>Specificity</b>	ZIP9 Polyclonal Antibody detects endogenous levels of ZIP9 protein.
<b>Immunogen Sequence</b>	



Western blot analysis of SLC39A9 Antibody. The lane on the right is blocked with the SLC39A9 peptide.



Western blot analysis of the lysates from HeLa cells using SLC39A9 antibody.



Western blot analysis of various cells using ZIP9 Polyclonal Antibody. Secondary antibody was diluted at 1:20000.

This product is suitable for in-vitro studies under the RESEARCH USE ONLY [RUO] licence. This product must not be used as for diagnostic or other medical purposes.  
St John's Laboratory Ltd, Knowledge Dock Business Centre, University Way, London, E16 2RD | Tel: 0208 223 3081