

Anti-ZFYVE19 antibody (311-360 aa) (STJ96307)

STJ96307

GENERAL INFORMATION

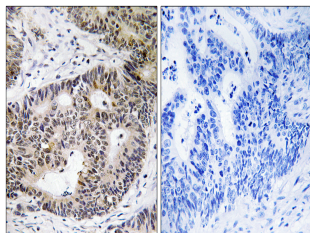
Product Type	Primary antibodies
Short Description	Rabbit polyclonal antibody anti-Abscission/NoCut checkpoint regulator (311-360 aa) is suitable for use in Western Blot, Immunohistochemistry, Immunofluorescence and ELISA research applications.
Applications	WB/IHC/IF/ELISA
Host/Source	Rabbit
Reactivity	Human/Rat/Mouse

PRODUCT PROPERTIES

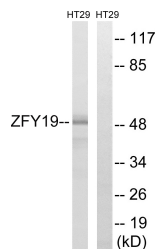
Clonality	Polyclonal
Clone ID	
Concentration	1 mg/mL
Conjugation	Unconjugated
Purification	The antibody was affinity-purified from rabbit antiserum by affinity-chromatography using epitope-specific immunogen.
Dilution Range	WB 1:500-1:2000 IHC 1:100-1:300 ELISA 1:40000 IF 1:50-200
Formulation	Liquid in PBS containing 50% Glycerol, 0.5% BSA and 0.02% Sodium Azide.
Isotype	IgG
Storage Instruction	Store at -20°C for up to 1 year from the date of receipt, and avoid repeat freeze-thaw cycles.

TARGET INFORMATION

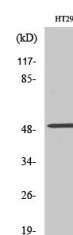
Gene ID	84936
Gene Symbol	ZFYVE19
Uniprot ID	ANCHR_HUMAN
Immunogen	The antiserum was produced against synthesized peptide derived from the human ZFYVE19 at the amino acid range 311-360
Immunogen Region	311-360 aa
Specificity	ZFYVE19 Polyclonal Antibody detects endogenous levels of ZFYVE19 protein.
Immunogen Sequence	



Immunohistochemistry analysis of paraffin-embedded human colon carcinoma tissue, using ZFYVE19 Antibody. The picture on the right is blocked with the synthesized peptide.



Western blot analysis of lysates from HT-29 cells, using ZFYVE19 Antibody. The lane on the right is blocked with the synthesized peptide.



Western blot analysis of various cells using ZFYVE19 Polyclonal Antibody. Secondary antibody was diluted at 1:20000