

Anti-ZC3H4 antibody (771-820 aa) (STJ96303)

STJ96303

GENERAL INFORMATION

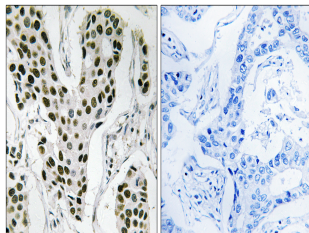
Product Type	Primary antibodies
Short Description	Rabbit polyclonal antibody anti-Zinc finger CCCH domain-containing protein 4 (771-820 aa) is suitable for use in Immunohistochemistry, Immunofluorescence and ELISA research applications.
Applications	IHC/IF/ELISA
Host/Source	Rabbit
Reactivity	Human/Mouse

PRODUCT PROPERTIES

Clonality	Polyclonal
Clone ID	
Concentration	1 mg/mL
Conjugation	Unconjugated
Purification	The antibody was affinity-purified from rabbit antiserum by affinity-chromatography using epitope-specific immunogen.
Dilution Range	IHC 1:100-1:300
	ELISA 1:10000
	IF 1:50-200
Formulation	Liquid in PBS containing 50% Glycerol, 0.5% BSA and 0.02% Sodium Azide.
Isotype	IgG
Storage Instruction	Store at -20°C for up to 1 year from the date of receipt, and avoid repeat freeze-thaw cycles.

TARGET INFORMATION

Gene ID	23211
Gene Symbol	ZC3H4
Uniprot ID	ZC3H4_HUMAN
Immunogen	The antiserum was produced against synthesized peptide derived from the human ZC3H4 at the amino acid range 771-820
Immunogen Region	771-820 aa
Specificity	ZC3H4 Polyclonal Antibody detects endogenous levels of ZC3H4 protein.
Immunogen Sequence	



Immunohistochemistry analysis of paraffin-embedded human breast carcinoma tissue, using ZC3H4 Antibody. The picture on the right is blocked with the synthesized peptide.